



Adult Cardiac Surgery Database  
Executive Summary  
10 Years



STS Period Ending 03/31/2017

2017 is a partial year: Jan 2017 - Mar 2017

**STS Adult Cardiac Surgery Database – Period Ending 3/31/2017 Executive Summary Contents**

- Graph 1. Number of Participating Sites Yearly Count
- Graph 2. Cumulative Number of Participating Sites
- Graph 3. Number of Procedures Yearly Count
- Graph 4. Cumulative Number of Procedures
- Graph 5. Cumulative Number of Isolated CAB Procedures
- Graph 6. Cumulative Number of Aortic Valve Procedures
- Graph 7. Cumulative Number of Mitral Valve Procedures
- Graph 8. Cumulative Number of Selected Other Cardiac Procedures
- Graph 9. Unadjusted Isolated CAB Operative Mortality
- Graph 10. Unadjusted Aortic Valve Operative Mortality
- Graph 11. Unadjusted Mitral Valve Operative Mortality
- Graph 12. Unadjusted Other Cardiac Operative Mortality
- Graph 13. Post-Procedure Length of Stay Isolated CAB Procedures
- Graph 14. Mean Post-Procedure Length of Stay for Aortic Valve Procedures
- Graph 15. Mean Post-Procedure Length of Stay for Mitral Valve Procedures
- Graph 16. Mean Post-Procedure Length of Stay for Other Cardiac Procedures

**Table 1 - January 2008 through March 2017 Procedure Distribution**

- Yearly Number of Sites in Analysis
- Yearly Overall Procedure Count
- Major Procedures Distribution
- Incidence of Other Procedures Distribution

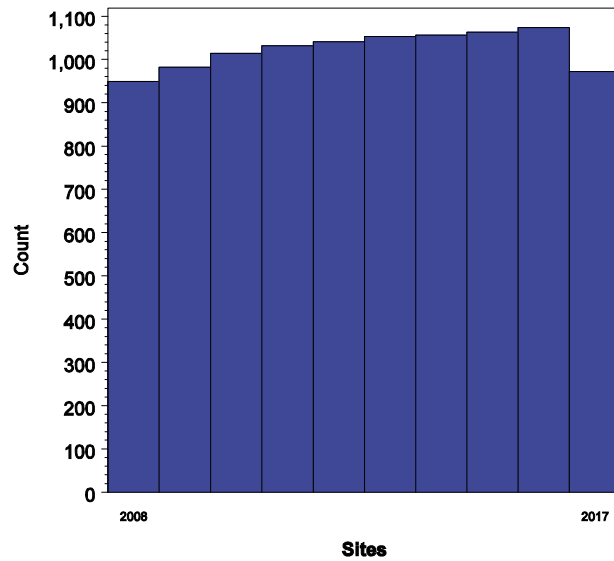


# Adult Cardiac Surgery Database Executive Summary 10 Years

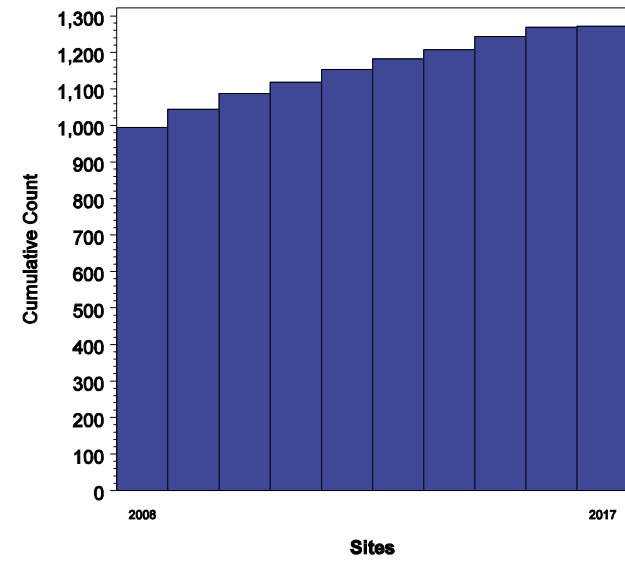
STS Period Ending 03/31/2017

2017 is a partial year: Jan 2017 - Mar 2017

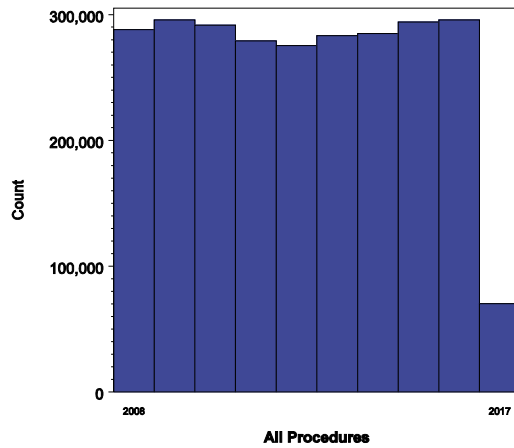
### Number of Participating Sites Yearly Count



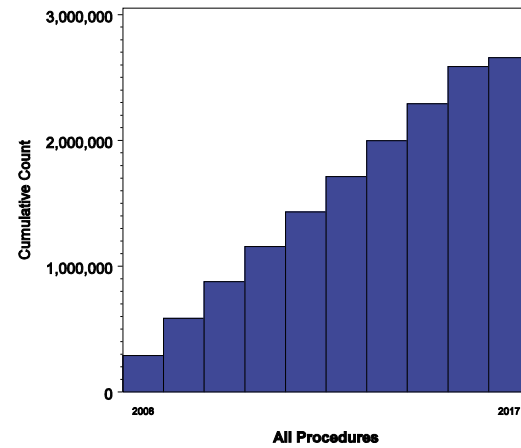
### Number of Participating Sites Cumulative over last 10 years



### Number of Procedures Yearly Count



### Number of Procedures Cumulative over last 10 years



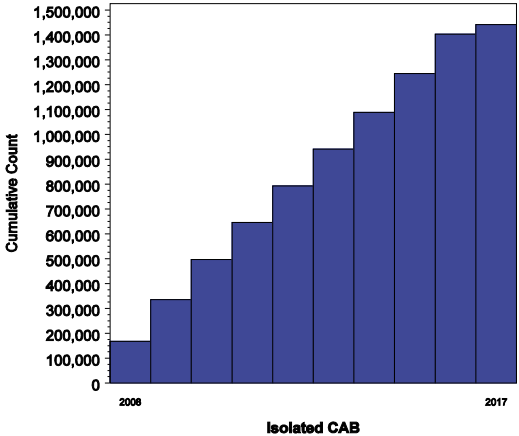


# Adult Cardiac Surgery Database Executive Summary 10 Years

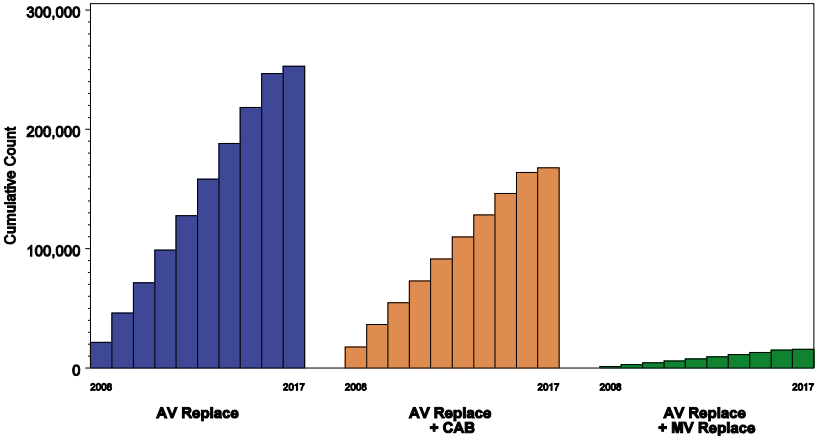


**STS Period Ending 03/31/2017**  
2017 is a partial year: Jan 2017 - Mar 2017

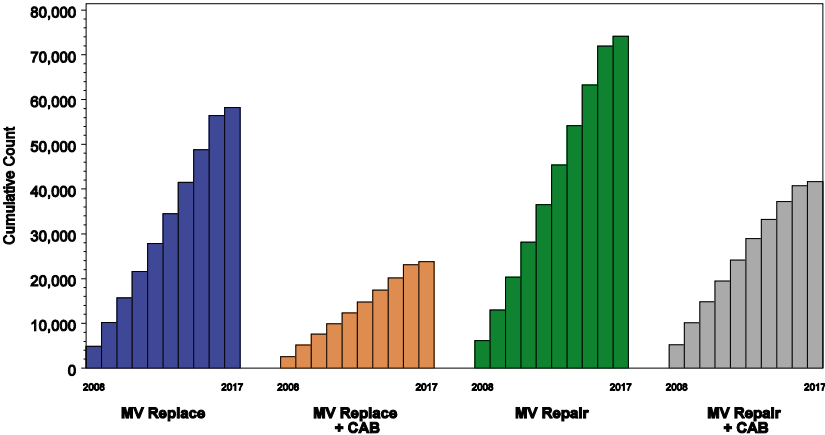
**Number of Isolated CABG Procedures**  
Cumulative over last 10 years



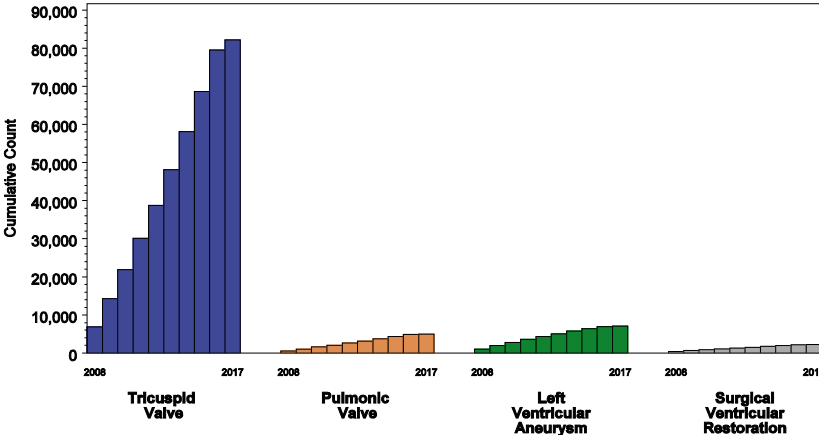
**Number of Aortic Valve Procedures**  
Cumulative over last 10 years



**Number of Mitral Valve Procedures**  
Cumulative over last 10 years



**Number of Selected Other Cardiac Procedures**  
Cumulative over last 10 years

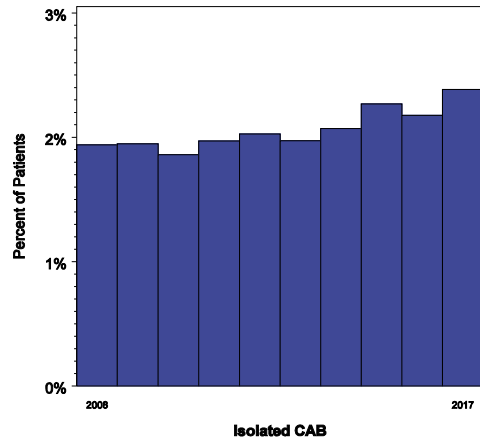


Executive Summary  
10 Years

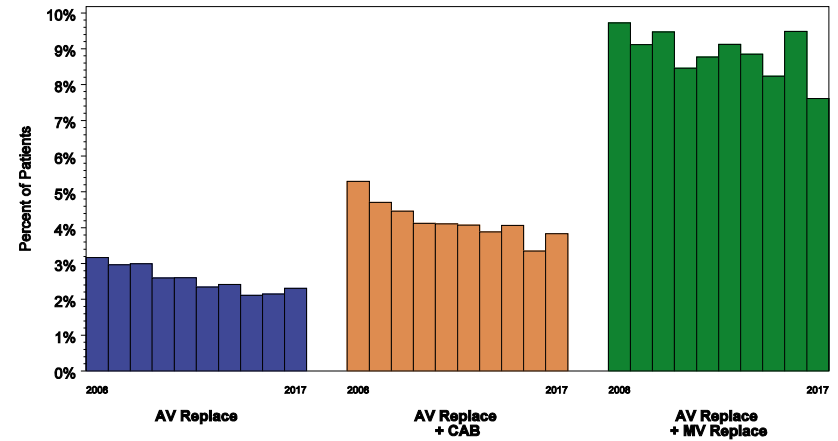
STS Period Ending 03/31/2017

2017 is a partial year: Jan 2017 - Mar 2017

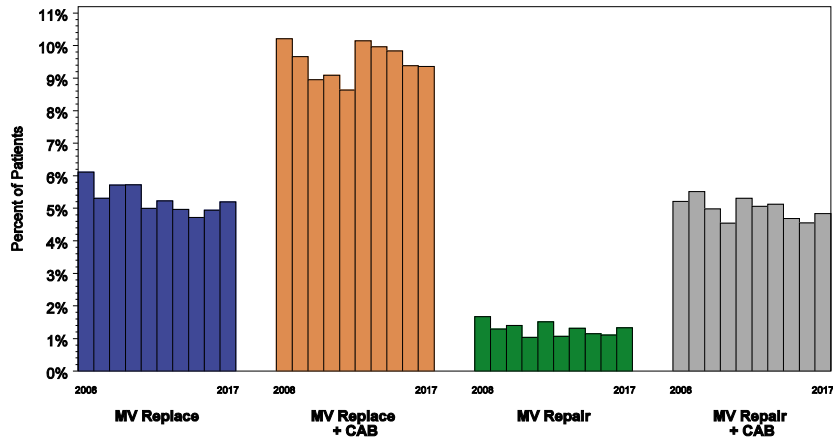
**Unadjusted Isolated CABG Operative Mortality**  
Yearly over last 10 years



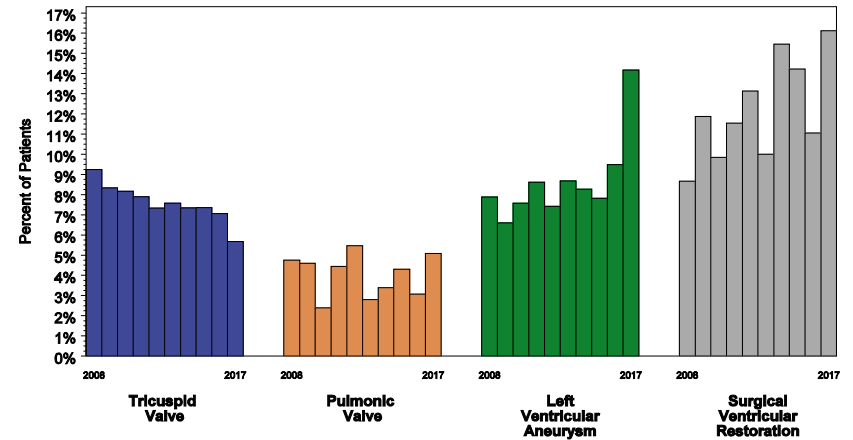
**Unadjusted Aortic Valve Operative Mortality**  
Yearly over last 10 years



**Unadjusted Mitral Valve Operative Mortality**  
Yearly over last 10 years



**Unadjusted Other Cardiac Operative Mortality**  
Yearly over last 10 years





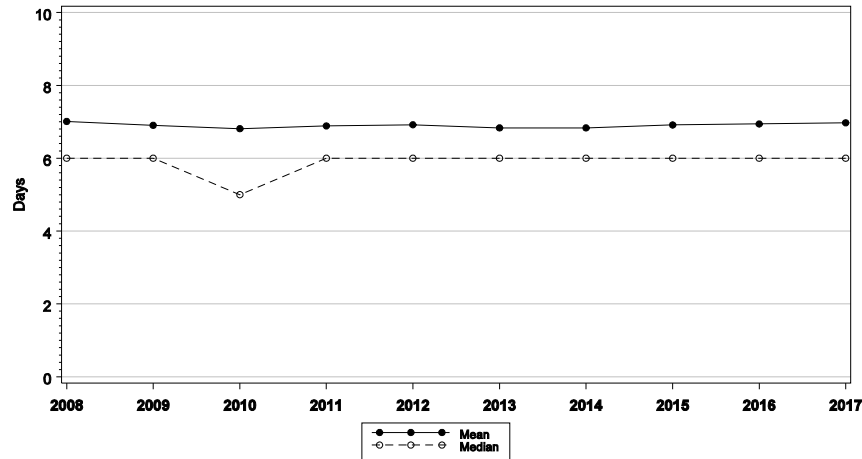
Adult Cardiac Surgery Database  
Executive Summary  
10 Years



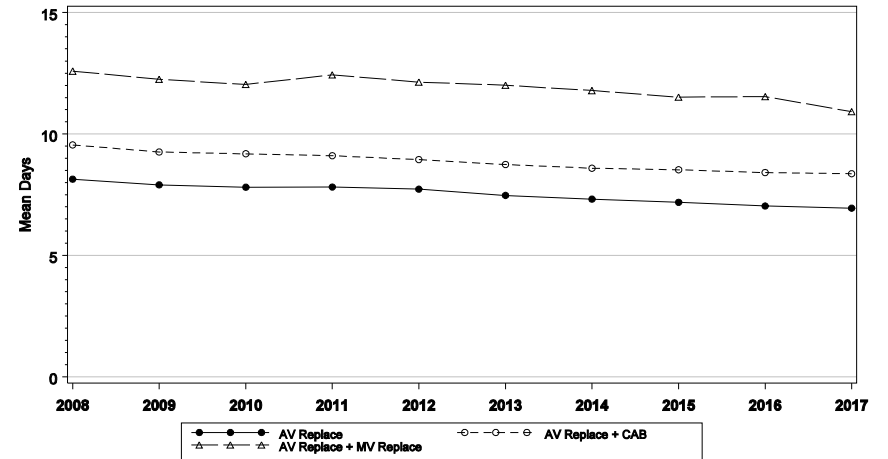
STS Period Ending 03/31/2017

2017 is a partial year: Jan 2017 - Mar 2017

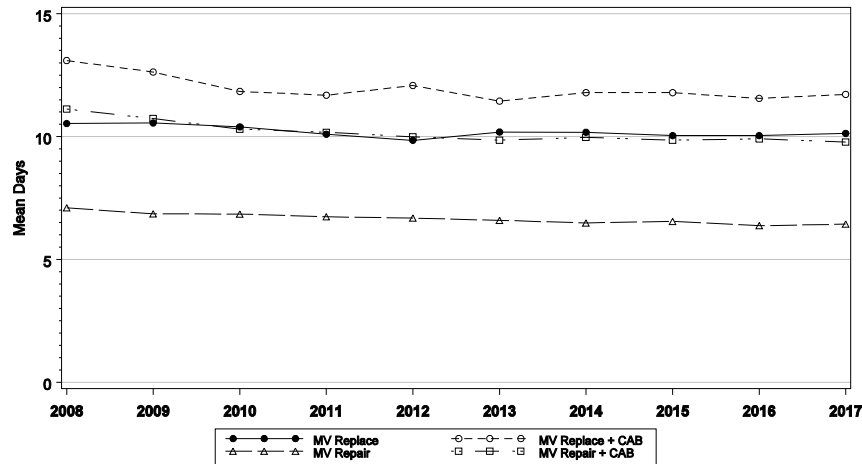
Post-Procedure LOS for Isolated CABG Procedures



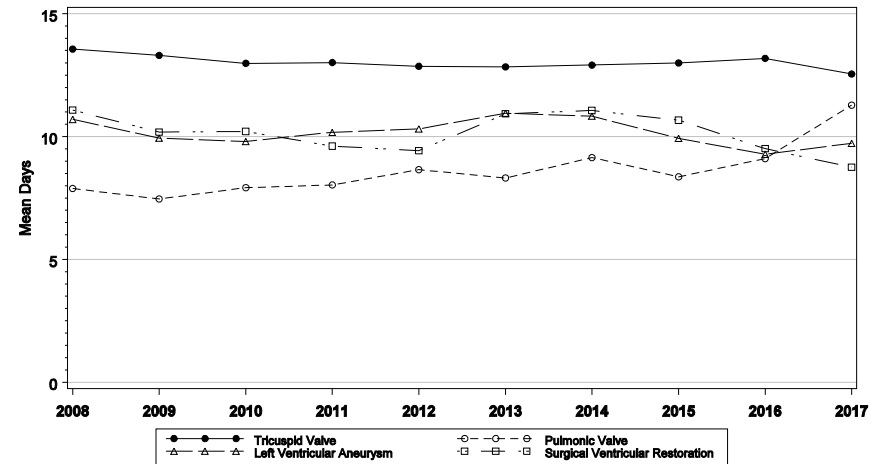
Post-Procedure LOS for Aortic Valve Procedures



Post-Procedure LOS for Mitral Valve Procedures



Post-Procedure LOS for Other Cardiac Procedures





**Adult Cardiac Surgery Database  
Executive Summary  
10 Years**



**STS Period Ending 03/31/2017**

2017 is a partial year: Jan 2017 - Mar 2017

	2008	2009	2010	2011	2012	2013	2014	2015	2016	2017
<b>Yearly Number of Sites in Analysis</b>	949	982	1,014	1,032	1,041	1,053	1,056	1,063	1,074	972
<b>Yearly Overall Procedure Count</b>	287,964	295,774	291,410	279,007	275,243	283,062	284,896	294,145	295,705	70,072
<b>Major Procedures</b>										
Isolated CABG .....	168,027	167,329	160,819	149,649	146,520	147,894	148,184	155,424	158,760	38,209
Isolated Aortic Valve Replacement .....	21,376	24,501	25,620	27,257	28,807	30,679	29,827	30,232	28,358	6,198
Isolated Mitral Valve Replacement .....	4,845	5,336	5,496	5,877	6,301	6,642	6,998	7,253	7,671	1,771
Aortic Valve Replacement + CABG .....	17,536	18,823	18,344	18,214	18,389	18,584	18,380	18,080	17,420	3,917
Mitral Valve Replacement + CABG .....	2,576	2,589	2,446	2,322	2,385	2,434	2,640	2,777	2,920	684
Aortic + Mitral Valve Replacements .....	1,317	1,503	1,468	1,609	1,665	1,777	1,911	1,871	1,993	460
Mitral Valve Repair .....	6,155	6,817	7,300	7,835	8,402	8,822	8,874	9,022	8,702	2,182
Mitral Valve Repair + CABG .....	5,177	4,898	4,759	4,596	4,710	4,797	4,294	3,994	3,514	889
Not Classified Above .....	60,955	63,978	65,158	61,648	58,064	61,433	63,788	65,492	66,367	15,762
<b>Incidence of Other Procedures</b>										
Pulmonic Valve .....	505	543	543	472	548	537	560	604	587	118
Tricuspid Valve .....	6,903	7,369	7,625	8,203	8,663	9,329	10,023	10,502	10,910	2,591
Ventricular Assist Device .....	1,512	1,863	2,434	3,202	3,572	4,165	4,748	5,564	5,450	1,192
LVA - Left Ventricular Aneurysm Repair ..	1,041	925	831	790	781	703	677	627	580	120
VSD - Ventricular Septal Defect Repair ..	634	625	637	672	701	652	752	766	837	188
ASD - Atrial Septal Defect Repair .....	3,940	4,285	4,230	4,687	5,214	5,424	5,898	5,988	6,082	1,466
Batista .....	47	34	42	17	-	-	-	-	-	-
Surgical Ventricular Restoration .....	404	303	193	208	198	210	220	218	199	62
Congenital Defect Repair .....	1,821	1,579	1,544	1,564	1,703	1,668	1,296	990	1,046	242
Transmyocardial Laser Revascularization	2,387	2,033	2,011	1,755	1,726	1,494	1,465	1,379	1,191	243
Cardiac Trauma .....	335	297	287	280	289	267	269	278	249	46
Cardiac Transplant .....	1,121	1,226	1,367	1,356	1,410	1,589	1,723	1,821	2,117	453
Arrhythmia Correction Surgery .....	1,370	1,211	1,159	1,039	924	941	851	807	771	174
Atrial Fibrillation Correction Surgery .....	16,013	16,593	16,825	17,568	21,188	24,666	19,477	11,867	12,440	3,187
Aortic Aneurysm .....	11,734	13,127	13,947	12,882	11,772	12,514	12,656	13,681	14,843	3,660
Ascending Aorta .....	10,024	11,431	12,140	10,633	9,170	9,784	10,056	11,265	12,236	3,020
Aortic Arch .....	2,762	3,183	3,501	3,155	2,859	3,103	3,289	3,906	4,392	1,097
Descending Aorta .....	1,122	1,154	1,281	1,047	755	769	872	1,082	1,220	337
Thoracoabdominal Aorta .....	670	631	708	660	654	740	661	599	768	163
Carotid Endarterectomy .....	2,081	1,884	1,775	1,581	1,396	1,388	1,316	1,264	1,145	282
Other Vascular .....	1,470	1,566	1,500	1,383	1,261	1,304	1,374	1,485	1,385	326
Other Thoracic .....	1,795	1,663	1,663	1,556	1,605	1,684	1,738	1,687	1,805	412