

Society of Thoracic Surgeons

Intermacs & Pedimacs
Quality Reporting Webinar

January 29, 2025



STS National Database[™]
Trusted. Transformed. Real-Time.

Intermacros Database Webinar

- Welcome and Introductions
- STS Updates
- Open Discussion

AGENDA



The STS Team

Nancy Honeycutt, BSN, RN LSSGBH, National Database Manager for the ACSD, Intermacs and Pedimacs

Carole Krohn, MPH, BSN, RN, LSSGB, Director of the STS National Database

Leighann Jones, BS, National Database Manager for the Congenital and General Thoracic Databases

Emily Conrad, MS, National Database Education Manager

The Intermacs Data Warehouse Team

Brandon Singletary, PhD, Statistician III, Epidemiologist

Ryan Cantor, PhD, Chief Scientific Officer

Rama Rudraraju, PhD, Director of Programming

Maceo Cleggett , Clinical Data Analyst

John Pennington, MSHI, Director of Data Management

Jeanne Anne Love, MS, Project Manager





Networking

- Our New Facebook Group!



When Are The Reports Distributed?

Calendar Quarter	Data Entry Deadline	Coverage Stop Date	Distribution Date
Q1	April 30th	March 31st	June 30th
Q2	July 31st	June 30th	September 30th
Q3	October 31st	September 30th	December 31st
Q4	January 31st	December 31st	March 31st

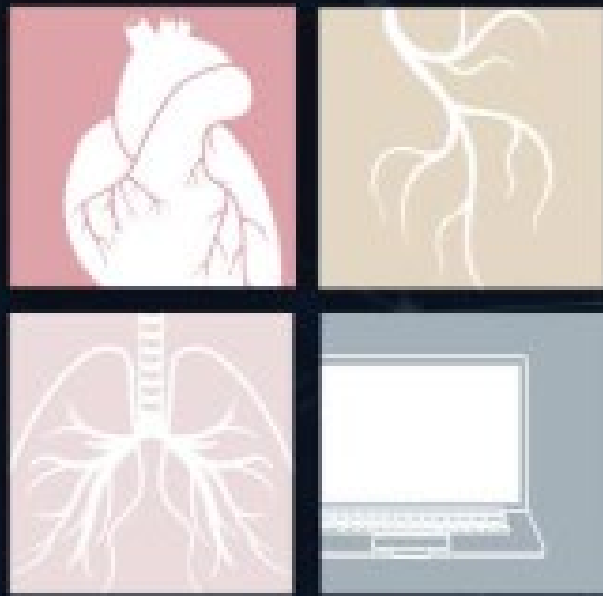


Upcoming Webinars

- Intermacs/Pedimacs User Group Webinar February 26th @1pm central
- Intermacs/Pedimacs User Group Webinar March 26th @1pm central



AQO 2025



ADVANCES IN QUALITY & OUTCOMES: *A Data Managers Meeting*

1 Year Post Cessation of Mechanical Support

This form collects outcome data for one year after the removal of support when subsequent devices are not implanted or utilized. The start of this year is determined by the date of one of the following events:

- Ventricular Recovery - Device Removed
- Ventricular Recovery - Device not removed but turned off
- Device removed (or turned off) for reasons other than recovery, transplant, or death



1 Year Post Cessation of Mechanical Support

Patient Scenario:

The patient had their HM3 LVAD decommissioned (turned off) on 12/1/2024 following the family's wishes to withdraw LVAD support. Subsequently, the patient was transitioned to palliative care on the same day, 12/1/2024. The patient passed away on 12/2/2024.



Registry Endpoints

- Death
- Explant-Recovery
- Explant-Cessation of Support
- Transplant
- Manual Endpoint



1 Year Post Cessation of Mechanical Support

Explant ✔ Complete	
Adverse Event Status	Was device explanted for any reason (includes exchanges or "turned off")? <input checked="" type="radio"/> Yes <input type="radio"/> No
Rehospitalization	
Major Infection	Explant date 12/01/2024
Major Bleeding	ST= <input type="text"/>
Neuro Dysfunction	Device explanted LVAD <input type="text"/>
Dev Mal/Pump Thr	Patient's Home Street Address <input type="text"/>
Other Adverse Events	ST= Undisclosed <input type="text"/>
Explant	Patient's Home City <input type="text"/>
Death	ST= Undisclosed <input type="text"/>
Pump Change	Patient's Home State/Territory/Province New York <input type="text"/>
Hemolysis	Patient's Home Zip Code 10036 <input type="text"/>

Event Details:
12/1/2024-device decommissioned
12/2/2024- patient expired



1 Year Post Cessation of Mechanical Support

Right Heart Failure

Renal Dysfunction

Submit Form

Click "Submit Form" to finish.

Was the patient on ECMO at any time since implant of their durable LVAD?

Yes
 No
 Unknown

If death or transplant occurred post cessation of MCS support please complete the 1 year post cessation form.

Explant reason Turned off (decommissioned) ▾

Reasons
Check all that apply

- Recovery
- Withdrawal of Support
- Device Malfunction: Elective (Please fill out Device Malfunction/Thrombus form)
- Device Malfunction: Emergent (Please fill out Device Malfunction/Thrombus form)
- Device Thrombosis: Elective (Please fill out Device Malfunction/Thrombus form)
- Device Thrombosis: Emergent (Please fill out Device Malfunction/Thrombus form)
- Infection: Elective (Please fill out Infection form)
- Infection: Emergent (Please fill out Infection form)
- Other

Validate and Submit

Event Details:
12/1/2024-device decommissioned
12/2/2024- patient expired



1 Year Post Cessation of Mechanical Support

Adverse Event Status
Complete

Rehospitalization
Complete Device# 131581

Explant
Complete Device# 131581

♥ Explant: LVAD - HeartMate III - Device#: 131581
12/1/2024

1 Year Post Cessation
of Mechanical Support
Complete

12/2/2024

Device# 131581

Last edit: pkpotter 01/28/2025




1 Year Post Cessation of Mechanical Support

1 Year Post Cessation of Mechanical Support


✔ Complete


Enter Information you are reporting

Date of Event  **Please enter the event date not today's date**

Death

Is the patient deceased ? Yes No

Death Date 

Primary cause of death 

Specify support withdrawn

Transplant

Was the patient transplanted ? Yes No

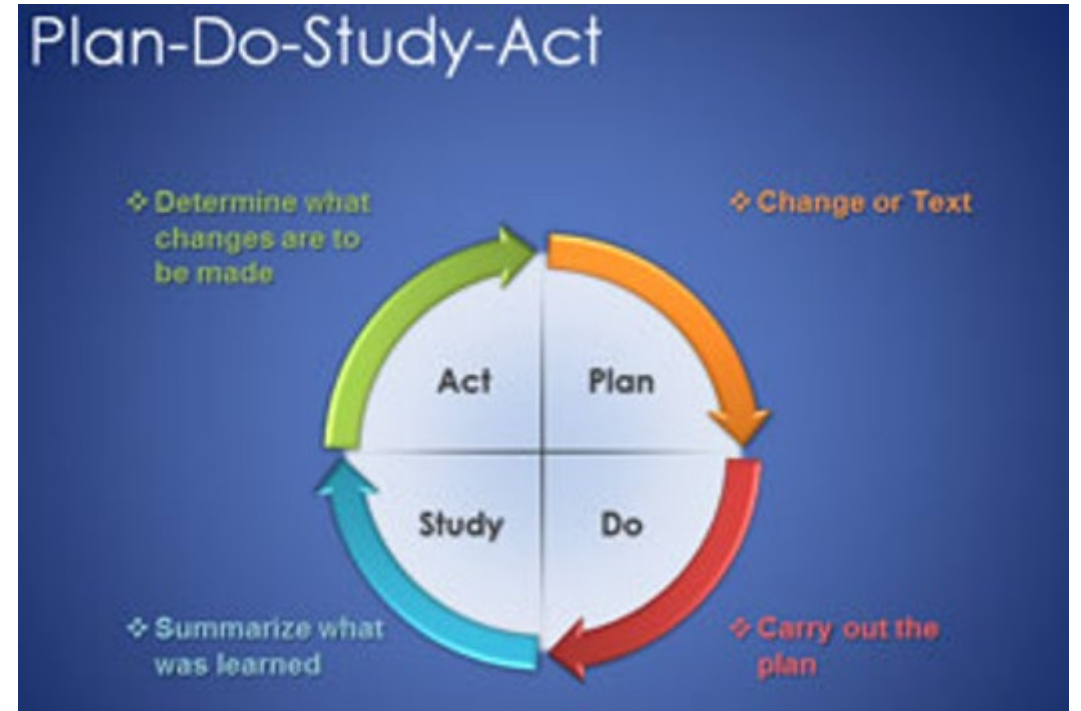
Event Details:
12/1/2024-device decommissioned
12/2/2024- patient expired



Polling Question

Does your center use your Interimacs and/or Pedimacs data to drive quality improvement for your patients?

- A. Yes
- B. No
- C. I don't know



Polling Question

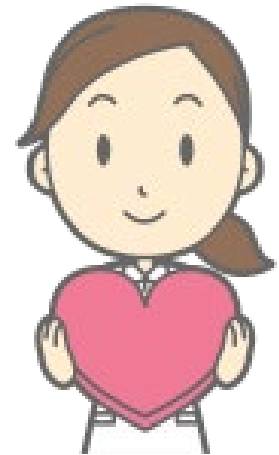
- Who is responsible for quality improvement projects at your center?
 - A. Data Coordinator
 - B. VAD Coordinator
 - C. Quality Department
 - D. Surgeon /Cardiologist
 - E. Other
 - F. I don't know



New for 2025!

Intermacros & Pedimacs Quality Webinar

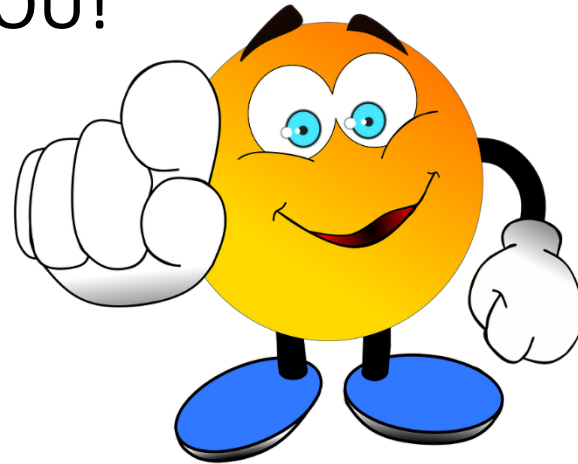
- Provide a forum to share best practices and quality successes with each other
- Opportunity to see how others are using the data to improve patient care
- Ongoing learning
- Enhanced engagement with data coordinators within the Intermacros and Pedimacs communities
- Promote an increased quality of life for our patients



New for 2025!

Intermacros & Pedimacs Quality Webinar

- Still in the planning stages (format, timing, etc.)
- We want to hear from YOU!



Please reach out to Patricia or Nancy if you would like to share your center's quality improvement project on a future webinar!



Resources

- <https://intermacs.kirso.net/intermacs-documents/> (All Things Intermacs and Pedimacs, Database User Guides, Data Collection Forms, QoL Surveys, FAQs, V6.0 Training Video)
- intermacs@kirso-admin.net (Password and Login)
- reports@kirso-admin.net (Reporting Questions)



Contact Information

Nancy Honeycutt, BSN, RN STS National Database
Manager, Intermacs and Pedimacs

- nhoneycutt@sts.org

Patricia Potter, BSN, RN, Intermacs Data warehouse
Manager of Clinical Affairs

- patricia.potter@kirso.net



Open Discussion



Please use the Q&A Function.



We will answer as many questions as possible.



We encourage your feedback and want to hear from you!

STS National Database™

Trusted. Transformed. Real-Time.

THANK YOU FOR JOINING!

