

The Society of Thoracic Surgeons

General Thoracic Surgery Database
Monthly Webinar
Data Manager Survey

April 9, 2025



STS National Database™
Trusted. Transformed. Real-Time.

Agenda

Welcome and Introductions

STS Updates

Data Manager Survey 2025

STS Updates

- 2025 Harvest Schedule
 - **Spring 2025 officially closed on March 7, 2025**
 - Reporting period includes OR dates 1/1/2022 – 12/31/2024
 - Report release scheduled for May 2025
 - Fall 2025 close date: **September 5, 2025**
 - Reporting period includes OR dates 7/1/2022 – 6/30/2025
- GTSD Executive Summary Dashboard (Community Page)
 - Currently in UAT
 - Expected release at the end of April

AQO 2025

- GTSD and CHSD Sessions: Thursday, October 2nd
- **ACSD Session: Friday, October 3rd**
- Intermacs and Pedimacs Session: Tuesday, September 23rd VIRTUAL
- Grand Hyatt San Antonio Riverwalk
- AQO Session Proposal deadline is **April 18th**
 - [Learn more about submitting a session proposal.](#)
- Both In Person (ACSD, CHSD, GTSD) and Virtual options (all databases) will be available
- Cost information will be shared as soon as it's available


[Home](#) > [Calendar of Events](#) > 2025 Advances in Quality & Outcomes: A Data Managers Meeting

Event

2025 Advances in Quality & Outcomes: A Data Managers Meeting

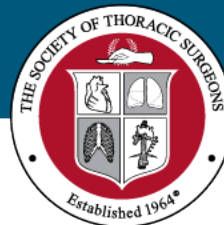
Discussions on valuable research and important clinical findings with the goal of improving data collection and patient outcomes.



 Date(s)
Oct 2—3, 2025

 Location
San Antonio, TX

 Audience
Allied Health
Data Manager



Networking Opportunities

- STS Data Managers Facebook Group
 - At last check up to 455 Members!
- STS Data Manager Collaborative
 - Formerly the Data Manager Mentorship Program, pairs data managers who are seeking advise related to data abstraction.
- STS Regional Groups
 - Offers a collaborative networking environment for peer-to-peer support and non-clinical guidance related to abstraction across specific regions.

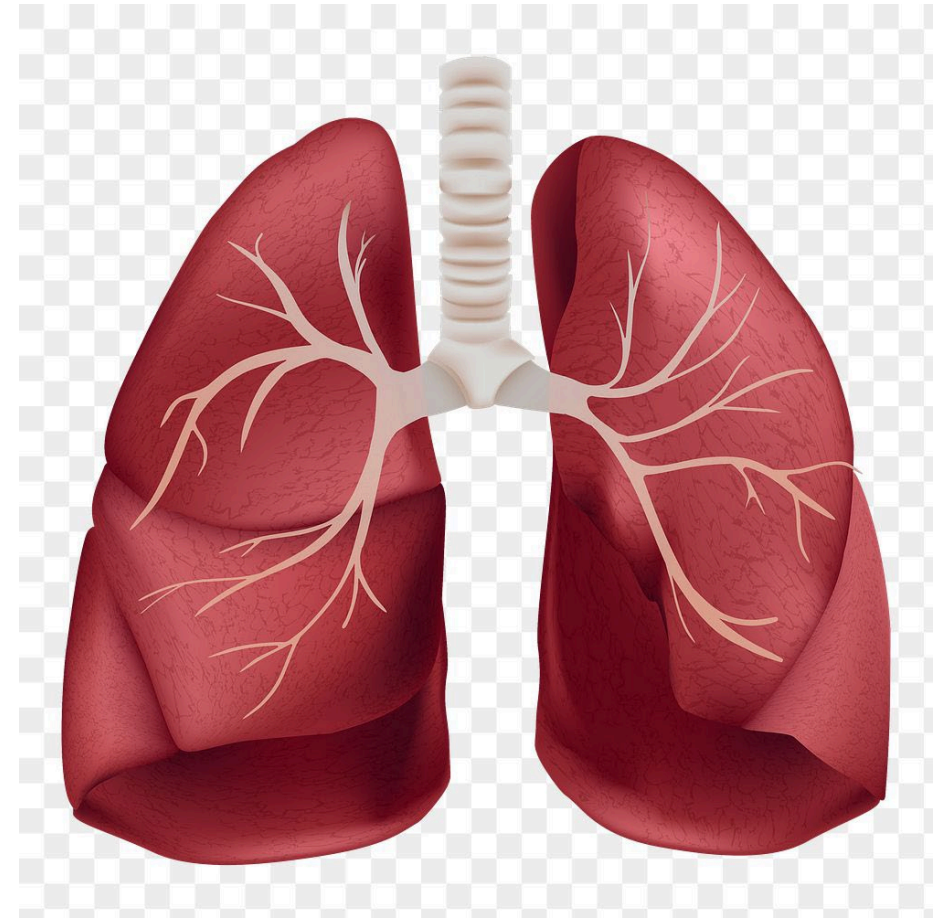


2025 GTSD Data Manager Survey



Are most of your cases esophageal or thoracic?

- ✓ Esophageal
- ✓ Thoracic
- ✓ Both (about ½ and ½)



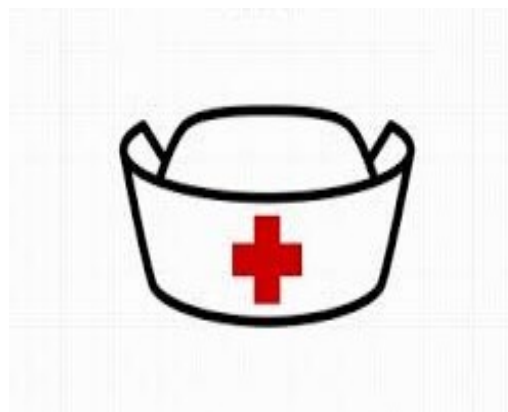
Do you have an oncology background?

- ✓ Yes
- ✓ No



What is your background?

- ✓ APN
- ✓ Health Information Management/Medical Records
- ✓ IT – non-medical
- ✓ Other Clinical
- ✓ Other Physician
- ✓ Perfusionist
- ✓ QI – non-medical
- ✓ RN





Who do you abstract for?

- ✓ Data Abstraction Company
- ✓ Hospital
- ✓ Both

How long have you been abstracting?

- ✓ Less than 1 year
- ✓ 1 to 2 years
- ✓ 3 to 5 years
- ✓ 6 to 9 years
- ✓ 10 years or more





EXPERIENCE

What was your previous experience?

- ✓ Clinical cardiac surgery (CV, OR, CVICU, Perfusion)
- ✓ Clinical non-cardiac surgery (cardiology, non-cardiology other medicine, medical administration)
- ✓ Non-clinical and not in healthcare
- ✓ Non-clinical but within healthcare



What are your work responsibilities?

- ✓ STS GTSD only
- ✓ STS database and other clinical responsibilities
- ✓ STS and other cardiology database(s)
- ✓ STS database and other non-clinical responsibilities
- ✓ STS database and other surgical database(s)
- ✓ Other, I do not abstract

For which database do you abstract?

- ✓ GTSD
- ✓ GTSD/ACSD
- ✓ CHSD/GTSD
- ✓ GTSD/Intermacs
- ✓ ACSD/CHSD/GTSD
- ✓ ACSD/CHSD/GTSD/Intermacs
- ✓ ACSD/CHSD/GTSD/Intermacs/Pedimacs



What is your assigned participant role in the STS National Database?

- ✓ Backup Data Contact
- ✓ Primary Data Contact
- ✓ Both
- ✓ Neither





How many people abstract at your hospital?

- ✓ 1
- ✓ 2
- ✓ 3
- ✓ 4
- ✓ 5+



How many cases do you abstract per month?

- ✓ Less than 5 cases
- ✓ 5 to 10 cases
- ✓ 11 to 20 cases
- ✓ 21 to 30 cases
- ✓ 31 to 40 cases
- ✓ 41 to 50 cases
- ✓ 51 to 100 cases
- ✓ 101 to 200 cases



How many hours does it take to abstract a case?

- ✓ Less than 1 hour
- ✓ 1 to 2 hours
- ✓ 3 to 4 hours
- ✓ 5 to 6 hours
- ✓ Greater than 6 hours



What is your timing of abstraction for a case?

- ✓ Real time
- ✓ Within 1 week of OR date
- ✓ 1 to 4 weeks after OR date
- ✓ Greater than 4 weeks after OR date



How many cases per year does your hospital perform?

- ✓ 0 to 50
- ✓ 51 to 100
- ✓ 101 to 200
- ✓ 201 to 500
- ✓ 501 to 1,000
- ✓ Greater than 1,000



Do you utilize a third-party abstraction company?

- ✓ Yes
- ✓ No
- ✓ Do not work at a hospital



What source do you collect data from for abstraction?

- ✓ Paper/scanned medical records
- ✓ Electronic health records (EHR)
- ✓ Both

How do you abstract data?

- ✓ Directly to vendor's software/DDE
- ✓ Paper/Electronic form to vendor's software/DDE



Is there a process in place for tracking patients post-operatively/discharge?

- ✓ Yes
- ✓ No

Does the surgeon fill out the operative related sections of the Data Collection Form?



- ✓ Yes, they fill out the operative related section(s)
- ✓ No, they do not fill out the data collection form

Are your surgeons available to answer questions from data managers?

- ✓ Yes
- ✓ No



How often do you meet with your surgeon leader(s)

- ✓ Daily
- ✓ Weekly
- ✓ Monthly
- ✓ I do not meet with my surgeon(s)



Do you review your data with your surgeon leader(s) before harvest close?

- ✓ Yes
- ✓ No



Do your surgeons review
the Spring and Fall
Reports?

- ✓ Yes
- ✓ No





Has your site ever been audited by STS?

- ✓ Yes
- ✓ No
- ✓ Unknown



Do you perform internal audits on your GTSD data?

- ✓ Yes
- ✓ No
- ✓ Unsure



Have you utilized your STS data for Quality Improvement projects?

- ✓ Yes
- ✓ No
- ✓ Unsure

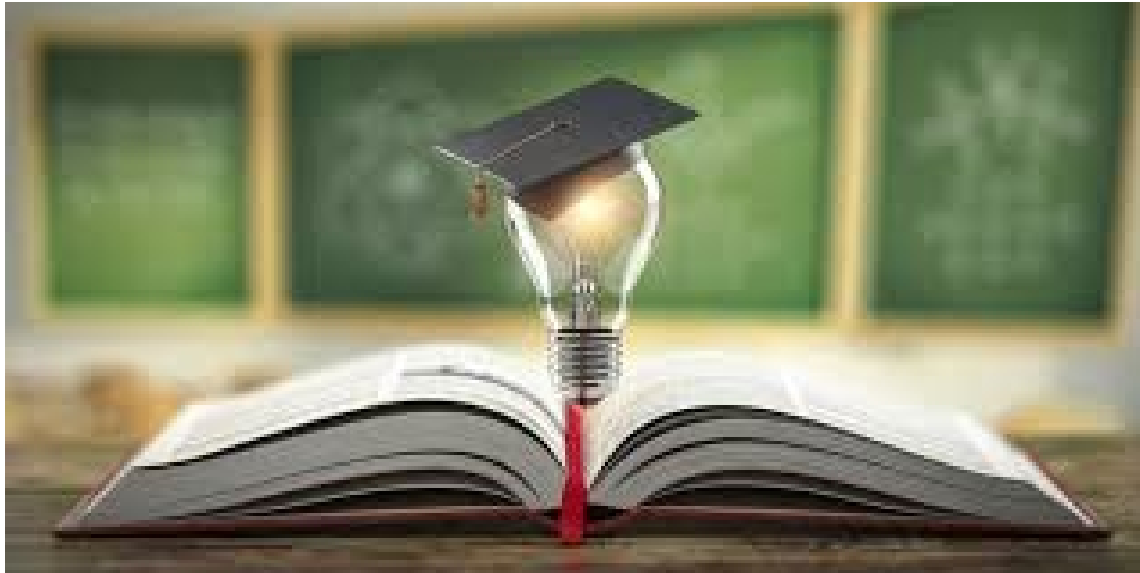
Rate STS's communication over the last year:

- ✓ Excellent
- ✓ Pretty Good
- ✓ Average
- ✓ Poor



Do you find the monthly webinars helpful?

- ✓ Yes
- ✓ No



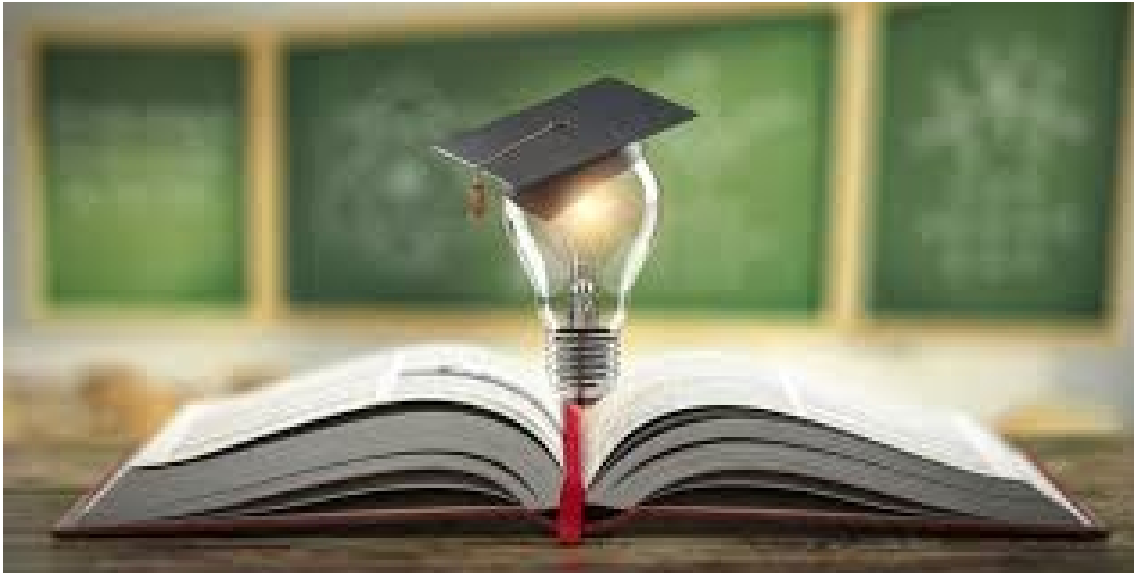
Do you feel you have the resources to do your job correctly?

- ✓ Yes, the resources are good
- ✓ No, need more training opportunities



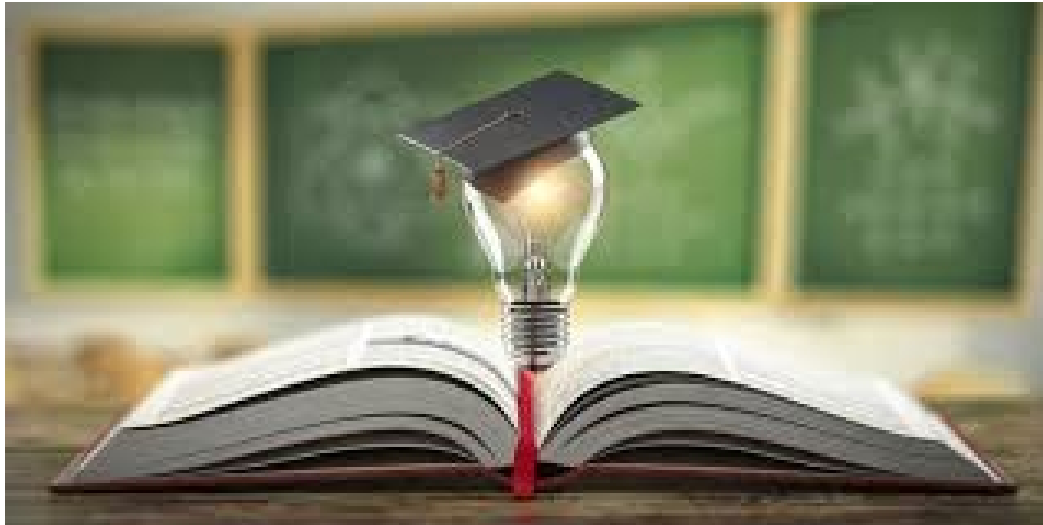
How do you utilize the GTSD training manual?

- ✓ Review daily/monthly, still have questions
- ✓ Review daily/ monthly, answers my questions
- ✓ Review prior to submitting an FAQ
- ✓ What is the GTSD training manual?



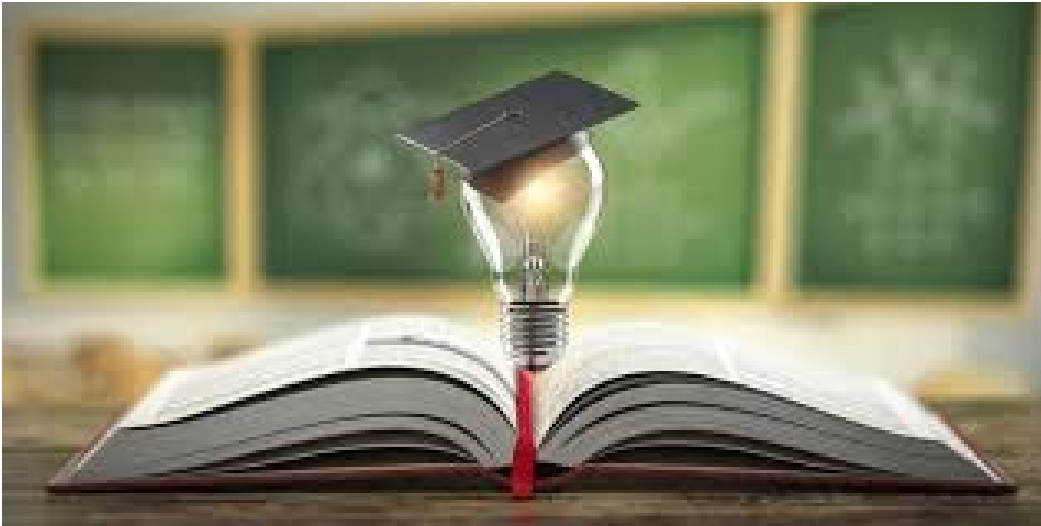
Do you participate in the Data Manager Collaborative?

- ✓ Yes, participating as a mentee
- ✓ Yes, participating as a mentor
- ✓ Aware of the program, not participating
- ✓ Unaware of this program



How would you rate your overall experience with the Data Manager Collaborative?

- ✓ Very Good
- ✓ Good
- ✓ Neutral
- ✓ Poor
- ✓ I do not participate



Are there any aspects of the program that could be improved?



On average, how many hours per week do you commit to the Data Manager Collaborative?

- ✓ 1 hour or less
- ✓ 2-4 hours
- ✓ 5-6 hours
- ✓ 7 + hours
- ✓ I do not participate

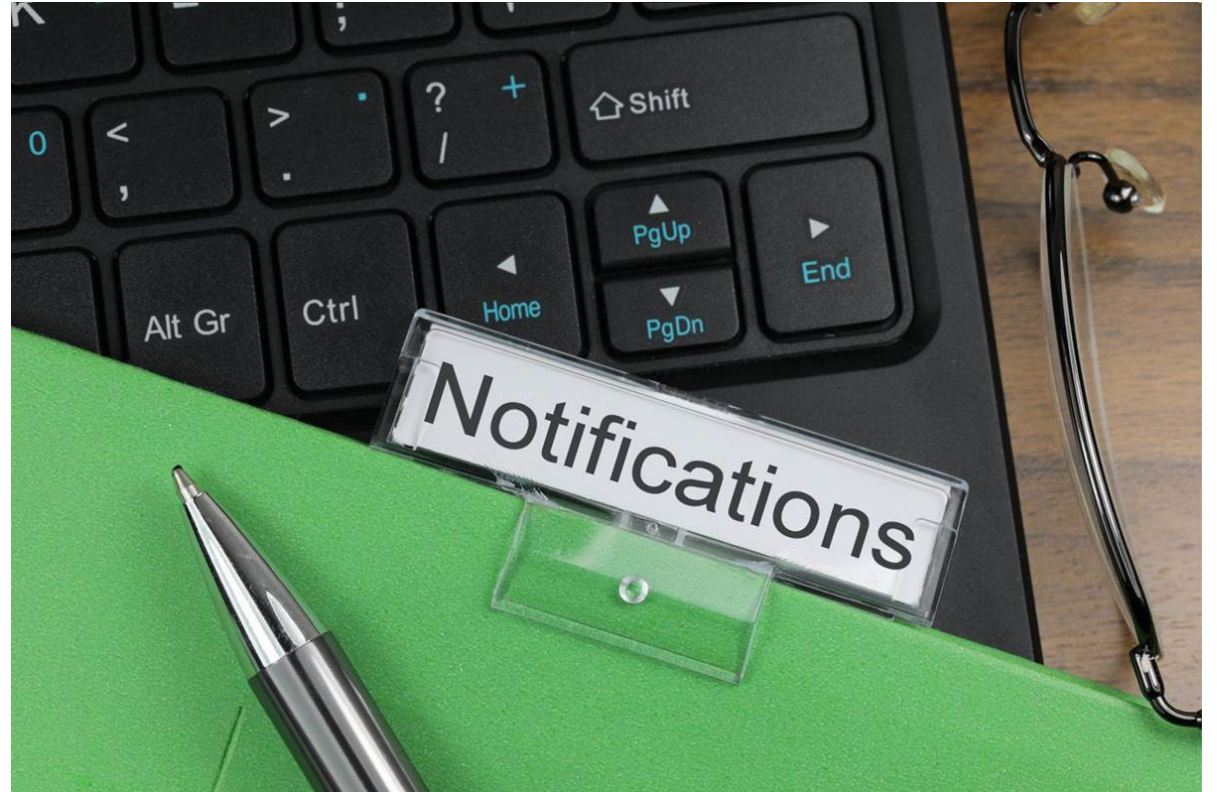


Are you familiar with the
IQVIA Resource Library?

- ✓ Yes
- ✓ No

Do you review the notifications
on the IQVIA platform?

- ✓ Yes
- ✓ No





Did any staff attend the STS Advances in Quality & Outcomes (AQO) conference?

- ✓ Yes
- ✓ No

If you attended AQO, did you find it useful?

✓ Yes

✓ No





If you attended the AQO Hot Topics Webinar, did you find it helpful?

✓ Yes

✓ No



How likely are you to attend the AQO in-person meeting in 2025?

- ✓ I'll be there
- ✓ Maybe
- ✓ Not likely





Does your institution budget for data managers to travel?

- ✓ Yes
- ✓ No

Which challenge do you face with in-person meetings the most?

- ✓ Budget/Affordability
- ✓ Date/Length of meeting
- ✓ Location



Who do you use for your electronic medical records (EMR)

- ✓ EPIC
- ✓ Oracle Cerner
- ✓ MEDITECH
- ✓ Next Gen
- ✓ Other





Open Discussion

Please use the
raise-hand
function.

Please use the
Q&A Function.

We will answer as
many questions as
possible.

We encourage
your feedback and
want to hear from
you!

Contact Information

- Carole Krohn, Director, STS National Database
 - ckrohn@sts.org
- Leigh Ann Jones, STS National Database Manager, GTSD, CHSD
 - ljones@sts.org
- STSDb@sts.org
 - Database Operational Questions (Billing, Contracts, Contacts)
- STSDb_Helpdesk@sts.org
 - IQVIA/Database Platform Questions (Uploader, DQR, Missing Variable, Dashboard, Password and Login)
- STSDb-FAQ@sts.org
 - Clinical Questions



*Thank You
for Joining!*

