

Society of Thoracic Surgeons General Thoracic Surgery Database

Quality Improvement Series: Reducing Readmission Rates

April 24, 2025

The logo for the STS National Database is centered within a large white circle. It features the text "STS National Database" in a bold, sans-serif font, with "STS" in red and "National Database" in dark blue. A small trademark symbol (TM) is positioned to the upper right of the word "Database". Below this, the tagline "Trusted. Transformed. Real-Time." is written in a smaller, dark blue, sans-serif font.

STS National DatabaseTM
Trusted. Transformed. Real-Time.

How do we do it???

Define

Nationally decrease readmission rates for Lung Cancer patients.

Measure

Baseline data to be pulled from the Spring 24 Harvest Analysis Report. Mean readmission rate and mean LOS will be reported.

Analyze

Using the STS Harvest Reports, sites will implement processes at their sites to decrease readmission rates. STS will provide education and support for processes.

Improve

Will engage site leaders who have already accomplished decreased readmission rates and to provide education on webinars and be available as resources.

Control

Will track monthly to see improvement nationally.

Readmission Rates – Why do we care

Readmitted Patients

- Higher Complication Rates
- Higher Rate of Infection
- Increased Rate of Mortality
- Longer Recovery Times
- Increased Opioid Utilization
- Quality of Life Impact
 - Patient Reported Outcomes

Health Systems

- Throughput Challenges
 - Complications & Readmissions Increase LOS
- Increase Cost associated with complications
- Decreased reimbursement risk
 - CMS Hospital Readmission Reduction Program



Define

Nationally decrease readmission rates for Lung Cancer patients.

Measure

Baseline data to be pulled from the Spring 24 Harvest Analysis Report. Mean readmission rate and mean LOS will be reported.

Analyze

Using the STS Harvest Reports, sites will implement processes at their sites to decrease readmission rates. STS will provide education and support for processes.

Improve

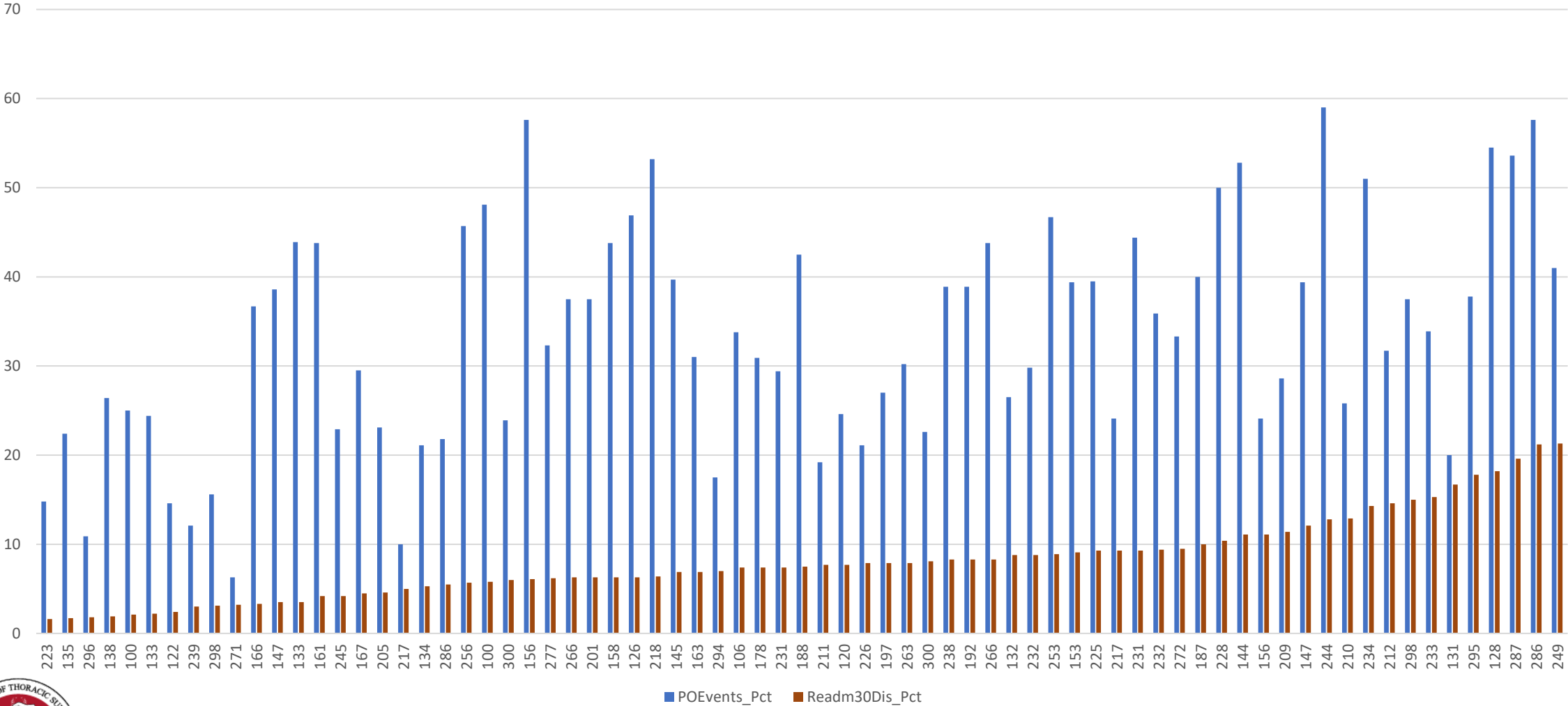
Will engage site leaders who have already accomplished decreased readmission rates and to provide education on webinars and be available as resources.

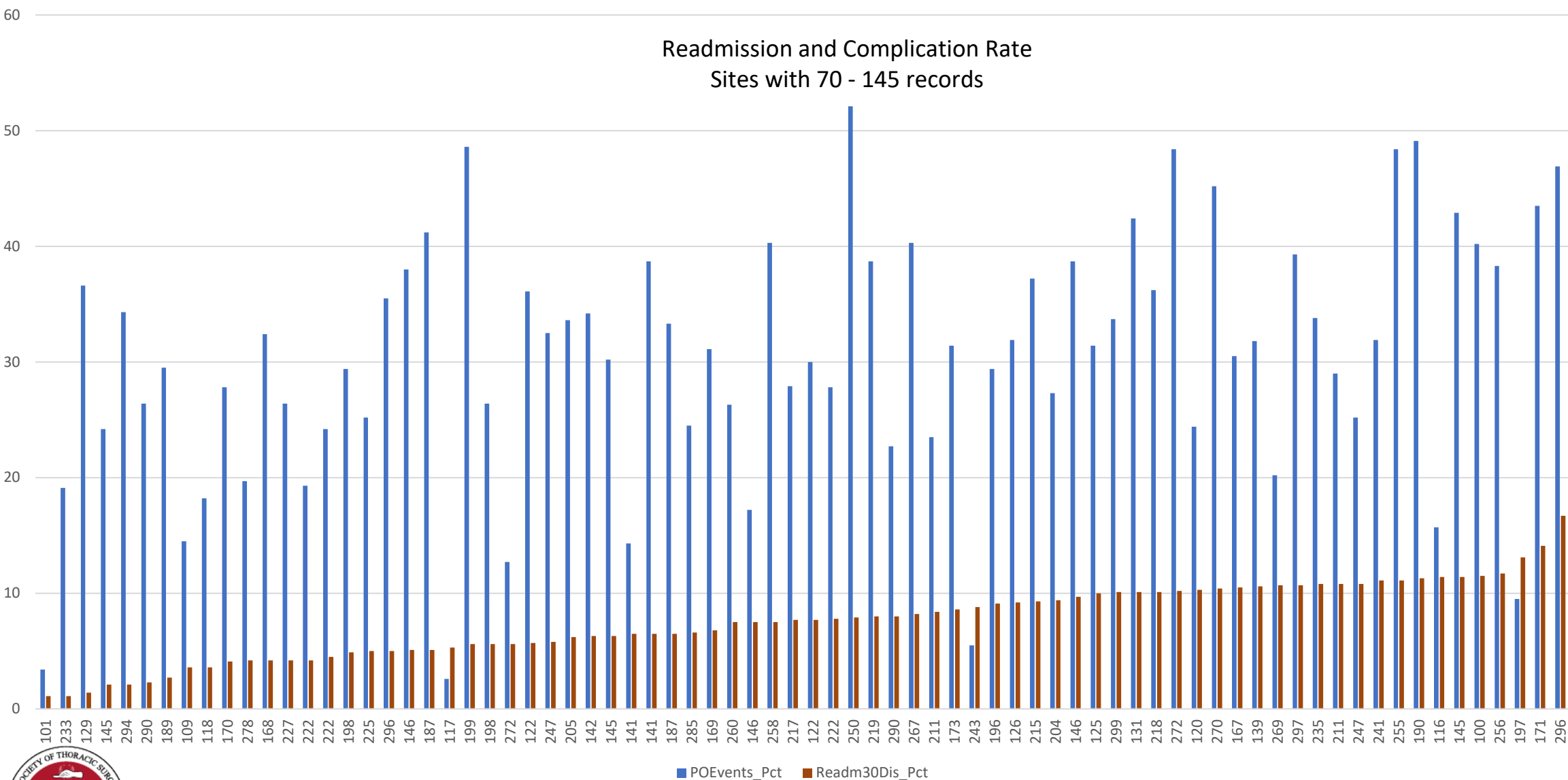
Control

Will track monthly to see improvement nationally.

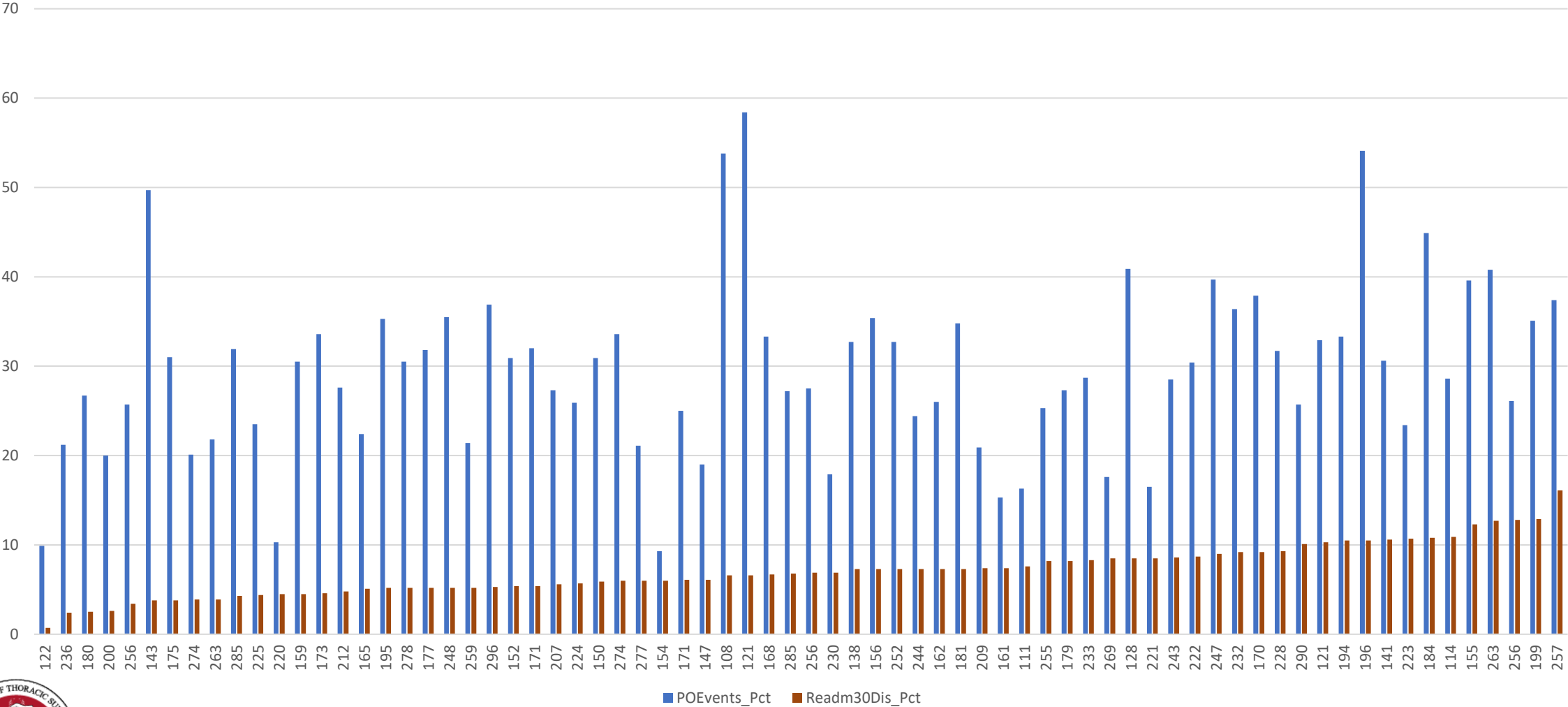


Readmission and Complication Rate
Sites with 30 - 69 records





Readmission and Complication Rate
Sites with greater than 145 records



Survey Q1: Have you reviewed your baseline data with your surgeon(s) in the context of this QI project?

A.Yes

B.No



Survey Q2: Have you engaged with institutional stakeholders beyond your surgeons (i.e. QI teams, non-physician clinicians etc.)

A.Yes

B.No



Where are we at now?

Define

Nationally decrease readmission rates for Lung Cancer patients.

Measure

Baseline data to be pulled from the Spring 24 Harvest Analysis Report. Mean readmission rate and mean LOS will be reported.

Analyze

Using the STS Harvest Reports, sites will implement processes at their sites to decrease readmission rates. STS will provide education and support for processes.

Improve

Will engage site leaders who have already accomplished decreased readmission rates and to provide education on webinars and be available as resources.

Control

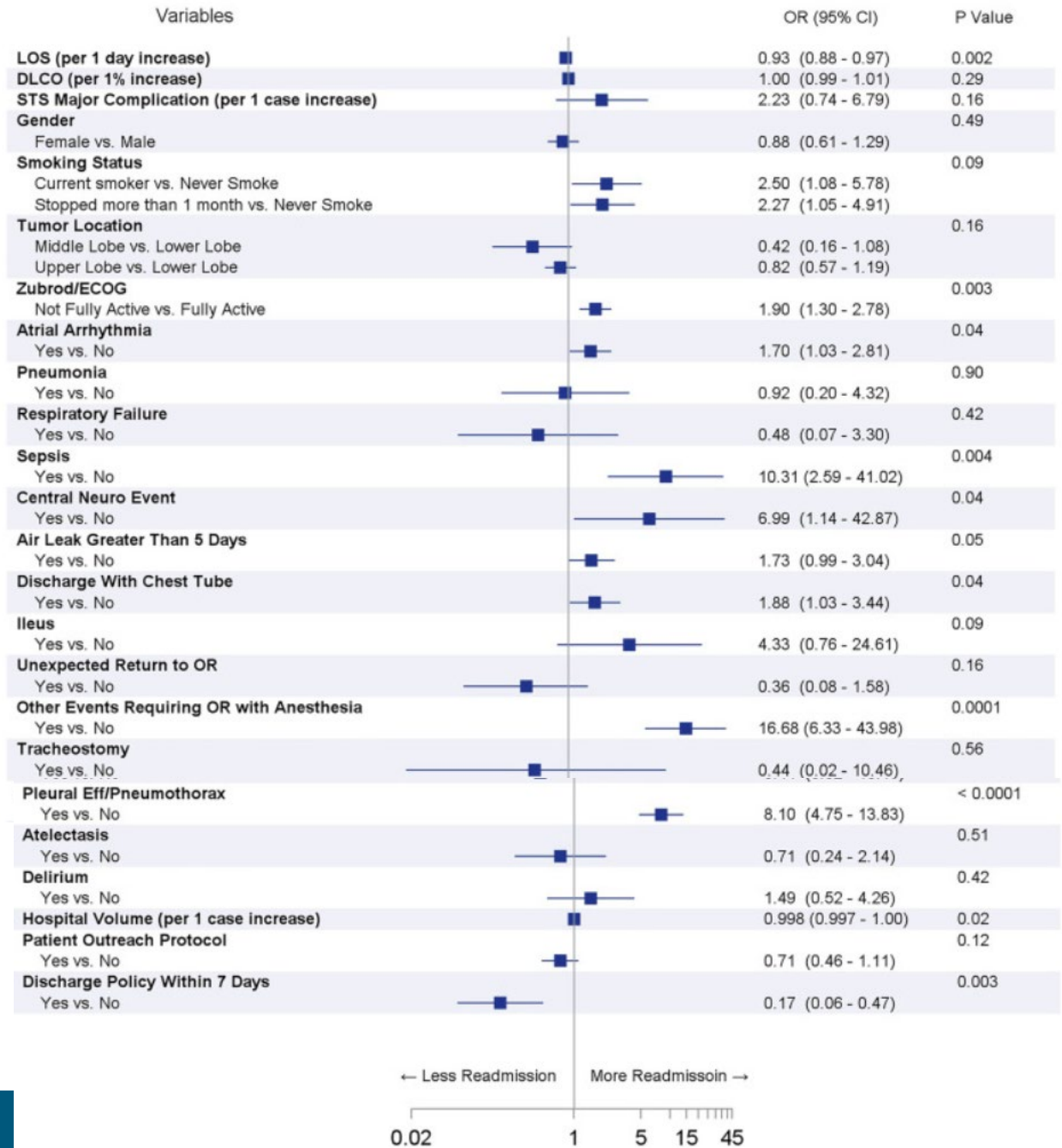
Will track monthly to see improvement nationally.



> Ann Thorac Surg. 2023 Feb;115(2):329-337. doi: 10.1016/j.athoracsur.2022.10.017.
Epub 2022 Oct 29.

Risk Factors for Readmission After Pulmonary Lobectomy: A Quality Collaborative Study

Nathan M Mollberg ¹, Chang He ², Melissa J Clark ², Kiran Lagisetty ³, Robert Welsh ⁴,
Andrew C Chang ³; Michigan Society of Thoracic and Cardiovascular Surgeons Quality Collaborative



Variables Identified as Significant for Readmission after Lobectomy

- + Return to OR
- + Sepsis
- + Pleural Effusion/Ptx Requiring Intervention
- + Central Neurological Event
- + Air Leak Greater than 5 Days
- + Atrial Arrhythmia Requiring Treatment



What do we want to tackle together?

- A. Return to OR
- B. Sepsis
- C. Pleural Effusion/Ptx Requiring Intervention
- D. Central Neurological Event
- E. Air Leak Greater than 5 Days
- F. Atrial Arrhythmia Requiring Treatment



What's next?

Define

Nationally decrease readmission rates for Lung Cancer patients.

Measure

Baseline data to be pulled from the Spring 24 Harvest Analysis Report. Mean readmission rate and mean LOS will be reported.

Analyze

Using the STS Harvest Reports, sites will implement processes at their sites to decrease readmission rates. STS will provide education and support for processes.

Improve

Will engage site leaders who have already accomplished decreased readmission rates and to provide education on webinars and be available as resources.

Control

Will track monthly to see improvement nationally.



Would your site be willing to present interventions targeting re-admission rates?

A.Yes

B.No



STS NDB Quality Improvement Series

What are our GOALS?

To show value of the database outside of just getting reports and Star Ratings

Decrease Cost

Showing how important YOU are in abstracting Data

Be part of a National Team Effort

Making your STS data actionable

Because it's awesome to work toward something together

Open Discussion



Please use the Q&A Function.



We will answer as many questions as possible.



We encourage your feedback and want to hear from you!

Upcoming GTSD Webinars

Monthly Webinars

- May 14 @ 2:30ET (1:30CT)
- June 14 @ 2:30ET (1:30CT)

Quality Improvement Series

- May 29 @ 3:00ET (2:00CT)
- June 26 @ 3:00ET (2:00CT)



Contact Information

Leigh Ann Jones, STS National
Database Manager, Congenital
and General Thoracic

- Ljones@sts.org
- 312-202-5822

Helpdesk Support
(Harvest Questions/Analysis
Report Questions/IQVIA
Platform)

- STSDB_helpdesk@sts.org

Database Operational
Questions
(Billing, Contracts, etc.)

- STSDB@sts.org



THANK YOU FOR JOINING!