

STS National Database™

Trusted. Transformed. Real-Time.

The Society of Thoracic Surgeons

Congenital Heart Surgery Database

April 28, 2026



Agenda

- Welcome and Introduction
- STS Update
- STS Data Manager Education Q&A



STS Updates

- April Training Manual Posted
- 2026 Harvest Dates

2026 Harvest

Term	Harvest Submission Window Close	Opt-Out Date	Includes Procedures Performed Through:	Report Posting	Comments
Spring 2026	March 27	March 31	December 31, 2025	Summer 2026	
Fall 2026	October 9	October 13	June 30, 2026	Winter 2026	

Analysis for each harvest is based on a 48-month window.

Data Submission Open is continuous for all harvest terms. Data Submission Close occurs at 11:59 p.m. Eastern on the date listed.



AQO 2026 – New Orleans

- **September 30 - October 2, 2026**
- CHSD & GTSD Sessions will be held Sept 30th (full day) and October 1st (half day)
- Intermacs & Pedimacs-Live Virtual Forum-September 24th
- ACSD Sessions will be held October 1st (full day) and October 2nd (half day)
- Half day sessions will include breakout discussions for the on-site databases

- Abstract Submission Form and Guideline:
 - [Abstract Submission Form](#)
 - Abstract submission deadline: June 12th



Education Discussion Topics

STS University Update

ASD Update – Diagnoses and Procedures

Aortic Arch / COA / Aneurysm Repair Update

STS University Update:

*Coming soon,
Spring 2026*

- STS University (STS-U) will provide short, targeted educational videos intended for new/newer data managers
- Videos will cover a variety of topics, including a general overview of operations, harvest process, report interpretation, "how-to" guides, and more!
- Goal: 6 videos annually
- Please send topic suggestions to Chasity and Leslie:
 - cwellnitz@sts.org
 - lwacker@sts.org
- Not broadcasted live



Topic Review

Atrial Septal Defect (ASD):

Diagnosis and Repair

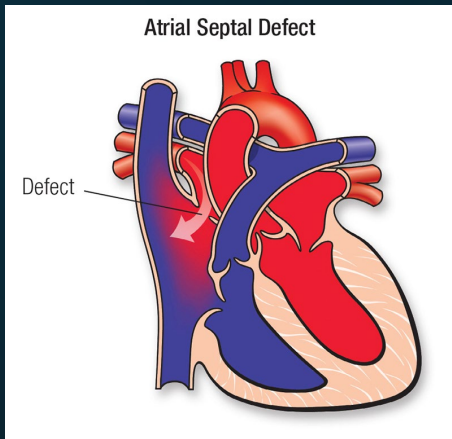
Diagnosis:

- Congenital ASD or PFO
- Enlargement congenital ASD or PFO
- Creation ASD with an intact septum

Procedure:

- Congenital (pre-existing) ASD
- Enlargement of a congenital ASD
- Surgically created (septectomy) ASD

Atrial Septal Defect (ASD) Diagnoses



Defect in the atrial septum allowing communication between the atria (absence of septal tissue):

- (20) ASD, Secundum
- (30) ASD, Sinus venosus
- (40) ASD, Coronary sinus
- (50) ASD, Common atrium

Defect where tissue failed to close (flap-like opening); no deficiency in septum primum/secundum:

- (10) PFO

Surgically created defect in atrial septum when one does not exist:

- (2150) ASD, Postoperative interatrial communication

Atrial Septal Defect (ASD) Diagnoses

Coding the ASD Diagnosis:

- Determine the presence of a congenital septal defect
- Determine if an existing septal defect was enlarged
- Determine if a new septal defect was created

Atrial Septal Defect (ASD) Diagnoses

Coding the ASD Diagnosis:

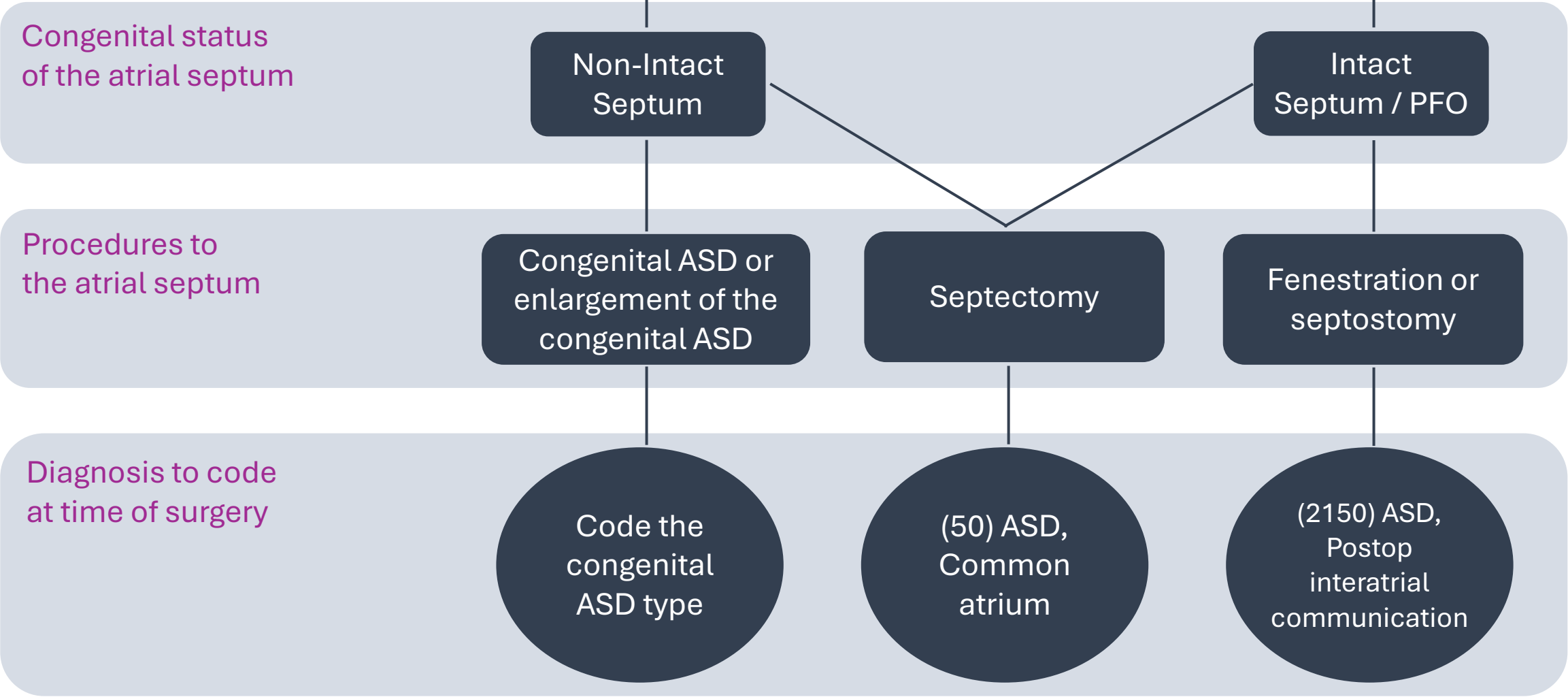
- With a *congenital* ASD or PFO:
 - Code the diagnosis listed in op note
 - Confirm with echo/imaging
- With a *congenital* ASD that was *enlarged* by the surgeon/catheter:
 - Code the original (congenital) ASD type prior to the enlargement

Atrial Septal Defect (ASD) Diagnoses

Coding the ASD Diagnosis:

- With an *intact* atrial septum (including PFO) and the surgeon or catheter performs atrial *fenestration or septostomy*:
 - Code diagnosis (2150) ASD, Postoperative interatrial communication
- When the surgeon performs atrial *septectomy* (intact/non-intact septum):
 - Code diagnosis (50) ASD, Common atrium
 - *Clarify this is not an enlargement of an existing ASD (partial septectomy) as the diagnosis is then the congenital ASD*

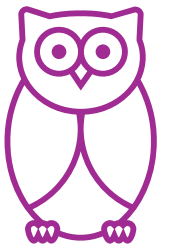
ASD Diagnosis



Atrial Septal Defect (ASD) Diagnoses

ASD Diagnosis Clarification:

- The op note lists a different type of ASD diagnosis than the echo
 - Work with your surgeon to clarify
 - Help surgeon/clinical team understand the need for correct diagnoses and procedures (analysis, combo codes...)
- Surgical ASD enlargement may be dictated as a partial septectomy
 - Coded diagnosis would be the existing congenital ASD, *not* common atrium
 - Work with your surgeon to clarify



Atrial Septal Defect (ASD) Repairs

ASD Repair Methods:

- (20) ASD repair, Primary closure
- (30) ASD repair, Patch
- (40) ASD repair, Device
- (50) ASD, Common atrium (single atrium), Septation
- (70) ASD partial closure
- (85) Atrial fenestration closure

PFO Repair Method:

- (10) PFO, Primary closure

Atrial Septal Defect (ASD) Repairs

Coding the ASD Procedure:

- Awareness of the status of the atrial septum (correct diagnosis)
- Determine method used to repair septal defect

Atrial Septal Defect (ASD) Repairs

Coding the PFO Repair:

With a *congenital* PFO diagnosis, code the repair based on the method utilized:

Diagnosis:

- (10) PFO

Procedure:

- (10) PFO, Primary closure
- (70) ASD partial closure (includes partial closure of PFO)

**Congenital
Diagnosis**

(10) PFO

**Possible
Repairs:**

(10) PFO Primary closure

(70) ASD partial closure

Coding the ASD Repair:

With a *congenital* ASD diagnosis, code the repair based on the method utilized

Diagnosis:

- | | |
|---------------------------|----------------------------|
| – (20) ASD, Secundum | – (40) ASD, Coronary sinus |
| – (30) ASD, Sinus venosus | |

Procedure:

- | |
|------------------------------------|
| – (20) ASD repair, Primary closure |
| – (30) ASD repair, Patch |
| – (40) ASD repair, Device |
| – (70) ASD partial closure |

Atrial Septal Defect (ASD) Repairs

**Congenital
Diagnoses**

(10) PFO

(20) ASD, Secundum
(30) ASD, Sinus venosus
(40) ASD, Coronary sinus

**Possible
Repairs:**

- (10) PFO Primary closure
- (70) ASD partial closure

- (20) ASD repair, Primary closure
- (30) ASD repair, Patch
- (40) ASD repair, Device
- (70) ASD partial closure

Atrial Septal Defect (ASD) Repairs

Coding the ASD Repair:

With a *congenital* common atrium diagnosis or when the surgeon performs an atrial *septectomy* (intact/non-intact septum), code the following:

Diagnosis:

- (50) ASD, Common atrium

Procedure:

- (50) ASD, Common atrium (single atrium),
Septation

Congenital Diagnoses

(50) ASD, Common atrium

(10) PFO

(20) ASD, Secundum
(30) ASD, Sinus venosus
(40) ASD, Coronary sinus

Repairs:

(50) ASD, Common atrium septation

(10) PFO Primary closure

(70) ASD partial closure

(20) ASD repair, Primary closure

(30) ASD repair, Patch

(40) ASD repair, Device

(70) ASD partial closure

↑
Also code common atrium septation when surgeon performed atrial septectomy

Coding the ASD Repair:

With a *congenital* ASD that was enlarged by the surgeon or catheter, code the repair based on the method utilized:

Diagnosis:

– (20) ASD, Secundum

– (30) ASD, Sinus venosus

– (40) ASD, Coronary sinus

Procedure:

– (20) ASD repair, Primary closure

– (30) ASD repair, Patch

– (40) ASD repair, Device

– (70) ASD partial closure

Atrial Septal Defect (ASD) Repairs

**Congenital
ASD
+
Enlargement**

(20) ASD, Secundum
(30) ASD, Sinus venosus
(40) ASD, Coronary sinus

(20) ASD repair, Primary closure

(30) ASD repair, Patch

(40) ASD repair, Device

(70) ASD partial closure

**Possible
Repairs**

Atrial Septal Defect (ASD) Repairs

Coding the ASD Repair:

With an *intact* atrial septum (including PFO) and a *fenestration* or *septostomy* is performed by the surgeon or catheter, code the following:

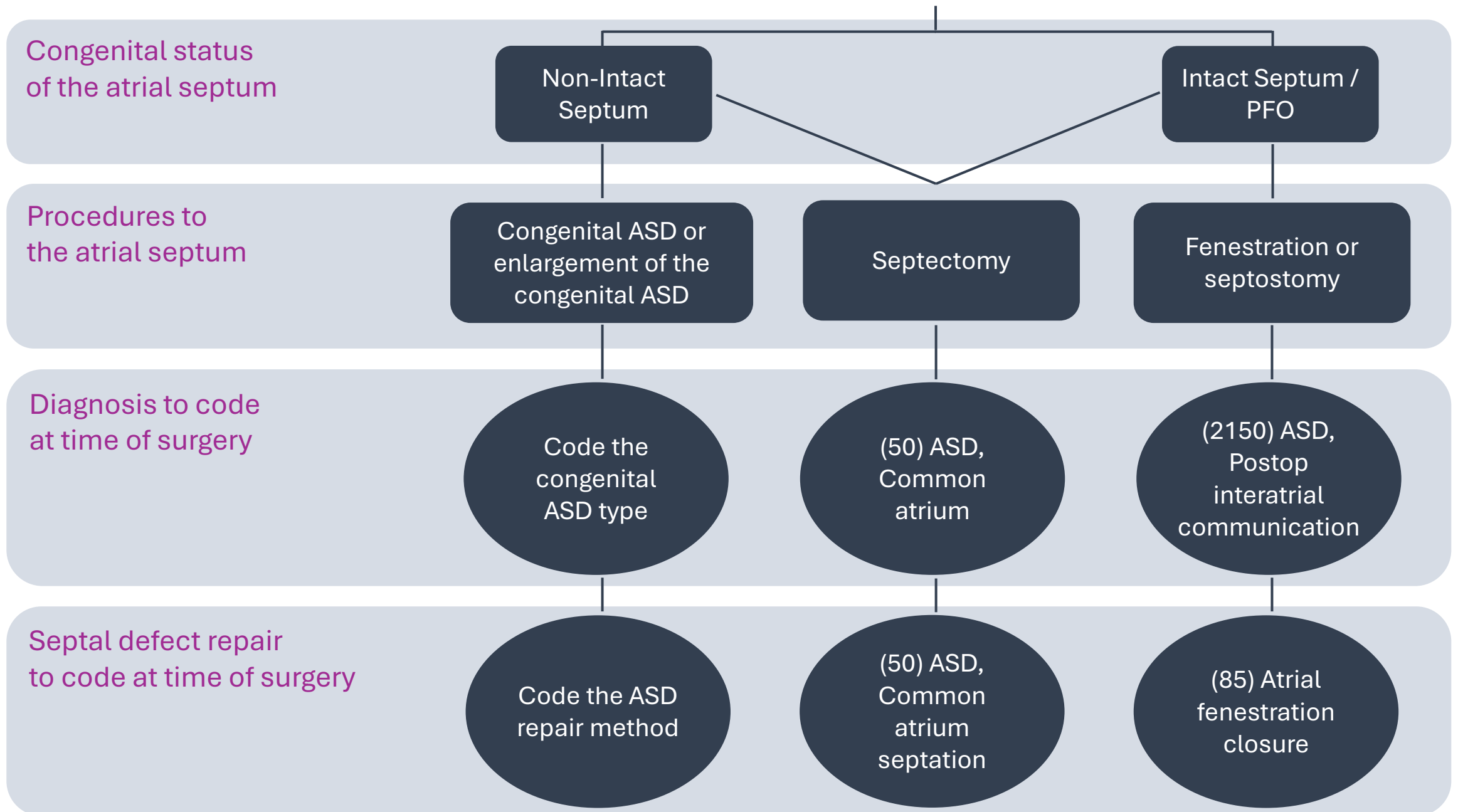
Diagnosis:

- (2150) ASD, Postoperative interatrial communication

Procedure:

- (85) Atrial fenestration closure

ASD Diagnosis & Repair



In Summary:

- The correct ASD or PFO diagnosis is dependent on whether the defect was congenital / created / enlarged
- The correct ASD or PFO repair is dependent on the diagnosis and the repair method utilized
- Refer to updated Training Manual (May-26) for clarification on ASD diagnoses and repairs

Aortic Arch Repair with a Coarctation and/or Aneurysm Repair

*Clarifications on
coding procedures*

Topic Review

Diagnosis:

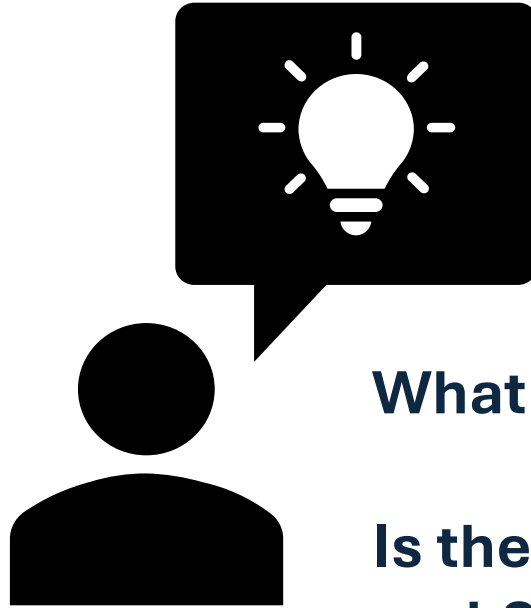
- Unchanged
- Code all defects present

Procedure – choose most fitting:

- Aortic Arch Repair
- Coarctation Repair (any type)
- Aneurysm Repair

Aortic Arch Repair with a Coarctation and/or Aneurysm Repair

*Clarifications on
coding procedures*



What is the arch specific diagnosis?

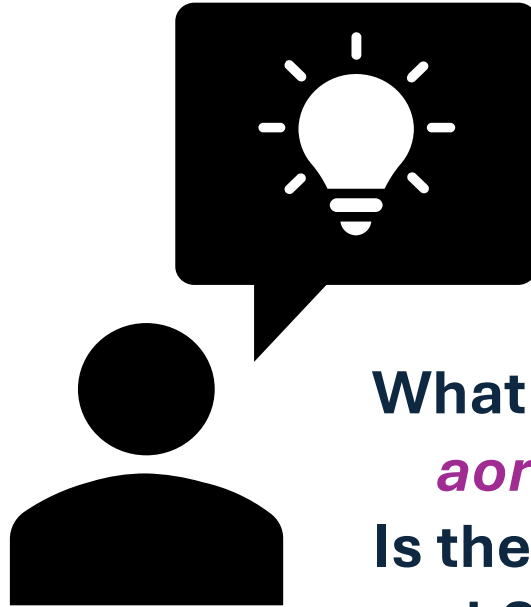
Is there anything else going on with the arch?

Is the repair to the aortic arch part of an aneurysm repair?

Does the arch repair include the coarctation?

Aortic Arch Repair with a Coarctation and/or Aneurysm Repair

*Clarifications on
coding procedures*



What is the arch specific diagnosis?

aortic arch hypoplasia

Is there anything else going on with the arch?

no

= (1280) Aortic arch repair

1280	Aortic arch repair	Repair of the aortic arch by any technique.
------	--------------------	---

Aortic Arch Repair with a Coarctation and/or Aneurysm Repair

*Clarifications on
coding procedures*



What is the specific diagnosis?

coarctation of aorta

Is there anything else going on with the arch?

no

= code specific coarctation repair

(1210) Coarctation repair, End to end

(1220) Coarctation repair, End to end, Extended

(3460) Coarctation repair, Descending aorta anastomosed to Ascending aorta

(1230) Coarctation repair, Subclavian flap

(1240) Coarctation repair, Patch aortoplasty

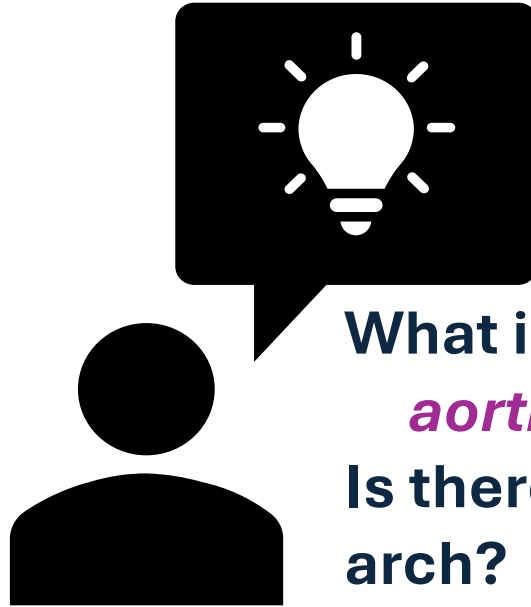
(1250) Coarctation repair, Interposition graft

(3470) Coarctation repair, Extra-anatomic Bypass graft

(1260) Coarctation repair, Other

Aortic Arch Repair with a Coarctation and/or Aneurysm Repair

*Clarifications on
coding procedures*



What is the arch specific diagnosis?

aortic arch aneurysm

Is there anything else going on with the arch?

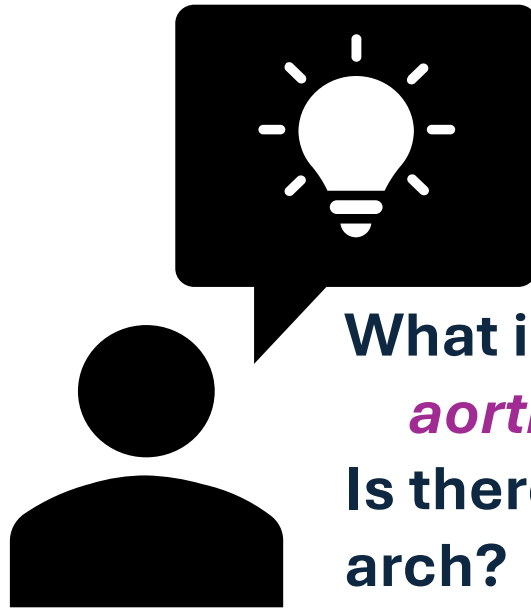
no

= (1380) Aortic aneurysm repair

1380	Aortic aneurysm repair	Repair of an aortic aneurysm by any technique.
------	------------------------	--

Aortic Arch Repair with a Coarctation and/or Aneurysm Repair

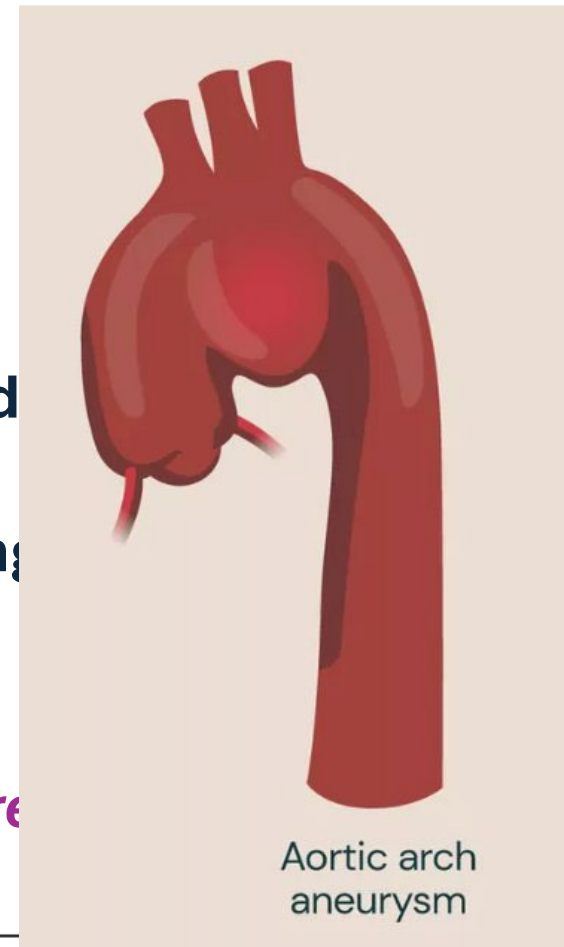
Clarifications on coding procedures



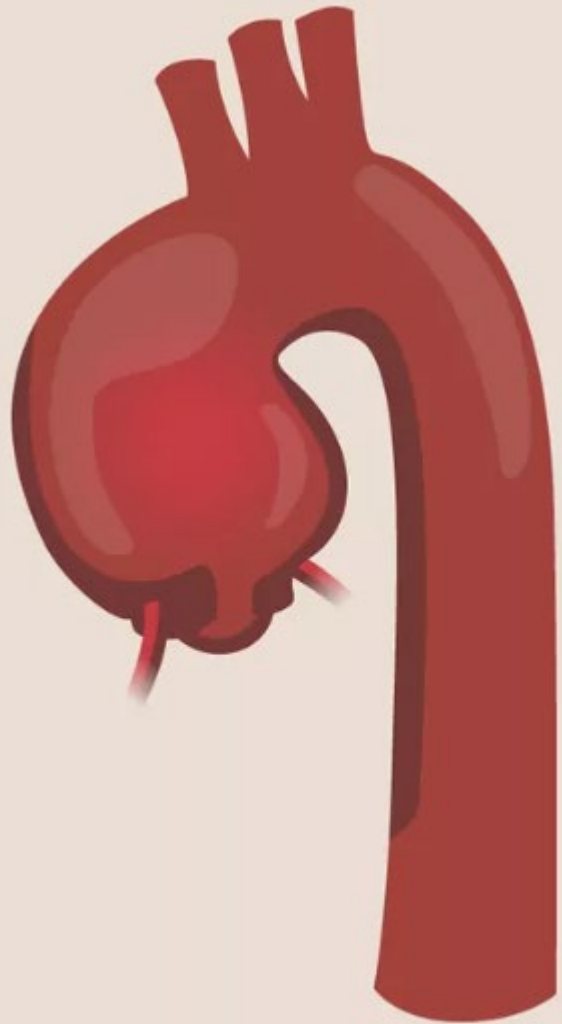
What is the arch specific diagnosis for ***aortic arch aneurysm***?
Is there anything else going on with the arch?

no

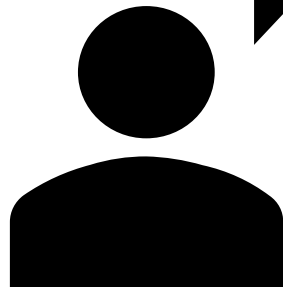
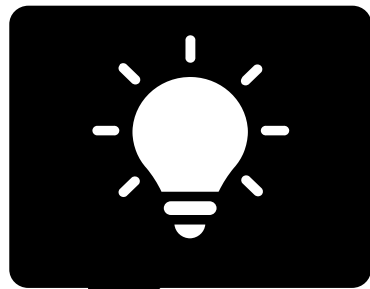
= (1380) Aortic aneurysm repair



1380	Aortic aneurysm repair	Repair of an aortic aneurysm by any technique.
------	------------------------	--



Ascending aortic aneurysm



What is the arch specific diagnosis?

nothing


Is there anything else going on with the arch?

no

Is the repair to the aortic arch part of an aneurysm repair?

yes

1380	Aortic aneurysm repair	Repair of an aortic aneurysm by any technique. <u>Coding Notes:</u> Includes the repair of pseudoaneurysms (update Mar-26). Includes aneurysm repairs extending into the aortic arch; do not code procedure (1280) Aortic arch repair) as a separate procedure (update Apr-26).
------	------------------------	--



Aortic Arch Repair with a Coarctation and/or Aneurysm Repair

*Clarifications on
coding procedures*



***Documentation may vary,
watch for both repairs
listed:***

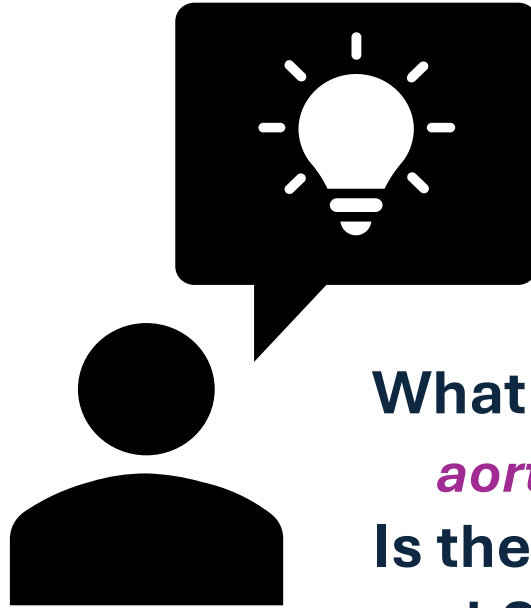
Arch repair with aneurysmectomy

**Ascending aorta aneurysm repair
with patch augmentation of
hemiarch**

- 1. Bentall operation**
- 2. Replacement of aortic arch with
dacron graft (for root,
ascending, and arch aneurysm)**

Aortic Arch Repair with a Coarctation and/or Aneurysm Repair

*Clarifications on
coding procedures*



What is the arch specific diagnosis?

aortic arch hypoplasia with coarctation

Is there anything else going on with the arch?

no

~~Is the repair to the aortic arch part of an aneurysm repair?~~

Does the arch repair include the coarctation?

yes

= (1280) Aortic arch repair

Aortic Arch Repair with a Coarctation and/or Aneurysm Repair

*Clarifications on
coding procedures*



***Documentation may vary,
watch for both repairs
listed – read the opnote:***

**Aortic arch reconstruction with
coarctectomy and patch
augmentation**

- 1. Aortic arch repair**
- 2. End-to-end coarc repair**

***Remember to still code
BOTH diagnoses***

In Summary:

- Code all applicable diagnoses
- Code the most appropriate repair for the arch – what is the repair fixing?
- There are times, though rare, when these repairs are done as two separate procedures – when in doubt, send an FAQ with Op Note
- Updates to TM will be made April – May 26

Open Discussion

Please use the
Q&A Function.

We will answer as
many questions as
possible.

We encourage
your feedback and
want to hear from
you!

Upcoming CHSD Webinars

Monthly Webinars

- 5/19/26 @ 12pmCT
- 6/16/26 @ 12pmCT



Contact Information

Leigh Ann Jones, STS
National Database Manager,
Congenital and General
Thoracic

- Ljones@sts.org

Tech Support
Analysis Report/Data
Submission Questions

- STSDB_helpdesk@sts.org

Database Operational
Questions (STS
Contracts/Database
Participation)

- STSDB@sts.org

Congenital STS Database Consultants

- Leslie Wacker lwacker@sts.org
- Chasity Wellnitz cwellnitz@sts.org



STS National Database[™]
Trusted. Transformed. Real-Time.

THANK YOU FOR JOINING!

