



Society of Thoracic Surgeons

Congenital Heart Surgery Database
Monthly Webinar

July 19, 2022

CHSD Monthly Webinar

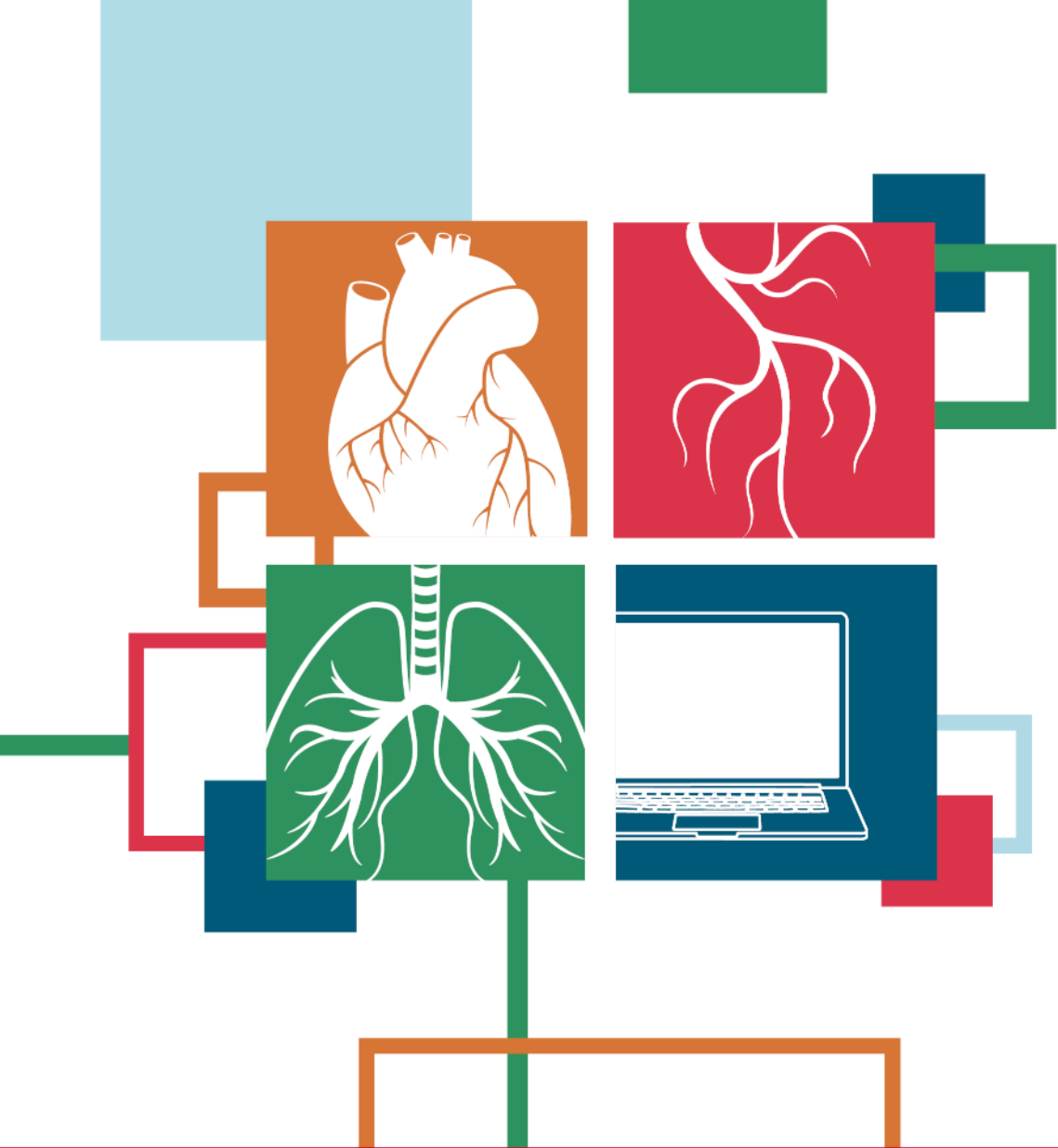
- Welcome and Introductions
- STS Update
- AQO 2022
- Education (Chasity Wellnitz)
- User Feedback
 - Include Ticket Number/Case Number



STS Updates

- **July Training Manual posted**
- **2021 Harvest Analysis Now Available**
 - Official STS Notification sent Monday, 7/18
 - Report related questions should be directed to chsdttechsupport@iqvia.com
- **2022 Harvest Update**
 - Task Force decision to conduct only the Fall 2022 Harvest (OR dates up through June 30, 2022)
 - Harvest close date is scheduled for **September 16 @ 11:59pm ET**
 - Opt Out by **September 20th**
- **Public Reporting Update**
 - Website to be updated by the end of August
 - Will utilize results from the Fall 2021 Harvest Analysis
 - Questions should be directed to Sydney Clinton (sclinton@sts.org)
- **2022 Audit Update**
 - 7/15 - Email Notification Letters sent (PDFC and Surgeon Rep) to selected sites
 - For those selected sites, audit related questions should be directed to CRS





ADVANCES IN QUALITY & OUTCOMES: A Data Managers Meeting

October 26-28, 2022 ■ PROVIDENCE, RHODE ISLAND



STS National Database™

Trusted. Transformed. Real-Time.



ADVANCES IN QUALITY & OUTCOMES: A Data Managers Meeting

October 26-28, 2022 ■ PROVIDENCE, RHODE ISLAND

AQO Registration is Open!

Receive Early Bird Registration Pricing through Friday, August 26.

STS MEMBER	Early Bird (August 26, 2022)	Standard
One Track	\$550	\$650
Two Tracks	\$900	\$1,100
Multi-Day (Three Tracks)	\$1,150	\$1,450
Virtual Pass	\$300	\$300

NON-MEMBER	Early Bird (August 26, 2022)	Standard
One Track	\$650	\$750
Two Tracks	\$1,100	\$1,300
Multi-Day (Three Tracks)	\$1,450	\$1,750
Virtual Pass	\$400	\$400



STS National Database™
Trusted. Transformed. Real-Time.

Friday, October 28, 2022 – Congenital Session

	In Person	Virtual Pass
• In-person sessions with live Q&A	✓	
• On-demand content (available mid-October)	✓	✓
• Recorded archive of in-person sessions (available mid-November)	✓	✓
• Breakfast, lunch, and refreshment breaks	✓	
• Personal interactions and networking with peers	✓	
• Networking Reception with speakers, vendors, and colleagues	✓	
• Face-to-face time with exhibitors	✓	
• Complete exhibitor listing	✓	✓
• Exhibit Hall giveaways and Passport to Prizes	✓	
• AQO Hot Topics Webinar (in January)	✓	✓
• Digital conference materials (PowerPoint presentations, handouts, and case scenarios)	✓	✓
• Opportunity to view and vote on your favorite e-poster	✓	✓
• Continuing Education/CEU Credits	✓	✓
• Explore the sights and sounds of Providence, Rhode Island	✓	



**The Society
of Thoracic
Surgeons**

**ADVANCES IN QUALITY & OUTCOMES:
A Data Managers Meeting**
October 26-28, 2022 ■ PROVIDENCE, RI



- Educational sessions and social events will take place at the Rhode Island Convention Center (1 Sabin St, Providence, RI 02903).
- A block of rooms have been reserved at the Omni Providence Hotel (1 West Exchange St., Providence, RI 02903). The special AQO group rate of \$259, plus state and local taxes, is guaranteed through **Tuesday, October 4**, or until the group block is sold out.
 - [Reserve online](#)
 - Call 401-598-8000. Be sure to reference “AQO” or “Advances in Quality and Outcomes.”



STS National Database™
Trusted. Transformed. Real-Time.



Education

Chasity Wellnitz

CHSD Consultant/Core Group

Phoenix Children's Hospital

Webinar Discussion Topics

- Covid Reporting Updates
- Harvest Timeline Updates
- Report Release
- Participant Dashboard Clarification



Coding Update:

Covid-19 Testing

Covid-19 Test Reporting

***Temp Code 6724* - Did the patient have a laboratory confirmed diagnosis of Covid-19**

- No (10)
- Yes, prior to hospitalization for this surgery (11)
- Yes, in hospital prior to surgery (12)
- Yes, in hospital after surgery (13)
- Yes, after discharge within 30 days of surgery (14)

Covid-19 Reporting

Coding Clarification:

- Reporting to include patient self reports of testing, including home testing kits
- Effective for surgery dates 07/01/22 forward
- Includes preop and postop reporting of home testing

Next Steps...

Covid-19 Test Reporting

TM Updates

- Update definition

Data Impact

- Effective for surgery dates 07/01/22 forward
- Do not code for prior surgery dates

Scenario:

Patient was admitted in May 2022 and upon admission parent reports a positive home test 1-week earlier.

Patient has surgery in July 2022. How do I report this test?

Covid Testing Reporting

Answer temp field (6724) Yes, prior to hospitalization for this surgery (harvest code 11)

- Self-reported test prior to hospitalization
- Surgery date after 07/01/22



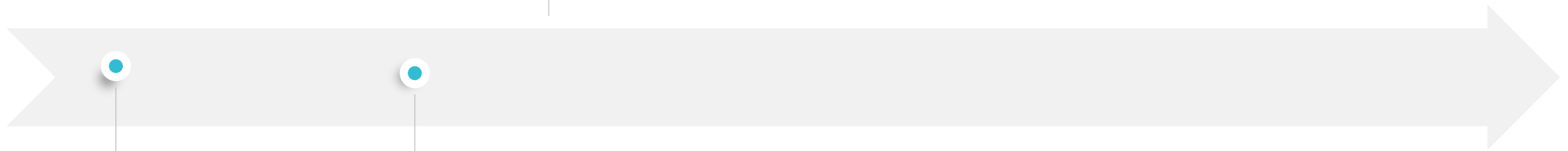
Harvest Timeline Updates

Harvest Timeline - *UPDATED*

Data Submitted

Surgery Dates:

July 1, 2017 – June 30, 2021



Harvest
Close Dec 23
2021

Reports
Released
07/18/22

1. Fall 2021 Harvest

Harvest Timeline - *UPDATED*

Data Submitted

Surgery Dates:
July 1, 2017 – June 30, 2021

Awaiting Harvest Close

Surgery Dates:
July 1, 2018 – June 30, 2022

**Report will be used
for public reporting
on the STS website
in August 2022**

Harvest
Close Dec
2021

Reports
Released
07/18/22

Harvest
Close
09/16/22

Analysis
Report
Release TBD

Fall 2021 Harvest

2022 Harvest

Harvest Timeline - *UPDATED*

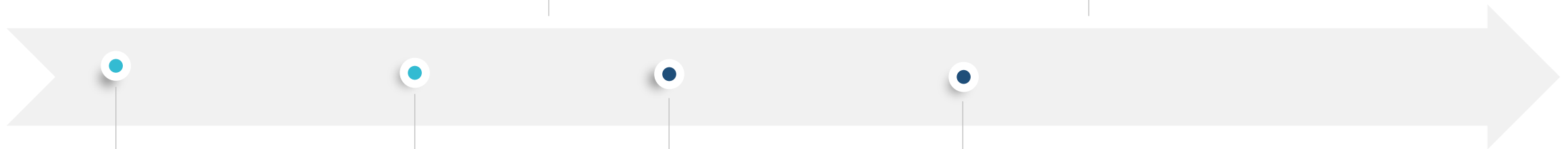
Data Submitted

Surgery Dates:
July 1, 2017 – June 30, 2021

Awaiting Harvest Close

Surgery Dates:
July 1, 2018 – June 30, 2022

**On Target for
Spring and
Fall Harvest**



Harvest
Close Dec
2021

Reports
Released
07/18/22

Harvest
Close
09/16/22

Analysis
Report
Release TBD

Fall 2021 Harvest

2022 Harvest

2023 Harvest

Fall 2021 Harvest Analysis

STAT Mortality Scores

- Previous STAT scores prior to update
- Appendix C - white colored columns
- Listed on STS website / CHSD / Data Collection / Version 3.41 / Additional resources

Combination Procedures

- Existing combination procedures
- Listed on STS website / CHSD Data Collection / Version 3.41 / Additional Resources

https://www.sts.org/sites/default/files/STS_Combination%20Procedures%2012_1_2020.pdf

Combined 2022 Harvest Analysis

STAT Mortality Scores

- Updated STAT Scores
- Appendix C – orange colored harvest codes; yellow columns
- Listed on STS website: CHSD Data Collection / Version 3.41 / Additional Resources

Combination Procedures

- New combination procedures will be employed at the analysis level
- Appendix C – blue colored harvest codes; yellow columns
- Not available in vendor software

*CHSD Risk Adjusted
Analysis Report Release*

- PLATFORM
 - Upload
 - Form Management
 - Notifications
- ANALYTICS
 - Operational Reports**
- RESOURCES

Primary Procedure Mismatch and Mortality Eligibility Summary Report

The Primary Procedure Mismatch report will identify operation records where the primary procedure that was assigned Case Eligibility for Inclusion in Mortality Analysis report will provide users with a summary of all cases that are identified

Harvest Summary Report

This report will allow users to see the current status of system validations on all active records saved in the database b

CHSD Participant Dashboard Report

This participant dashboard report will display NON-ANALYZED data results for the congenital heart surgery database.

CHSD Risk Adjusted Dashboard Report

The electronic CHSD Risk Adjusted Report includes analyzed harvest data results in place of the previous reports providing performance against the STS overall for the same time period.



Select Report

Select Report Dates



Reporting Period

Select

Select

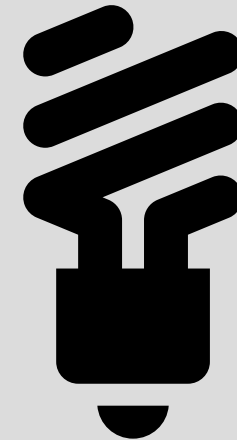
07/01/2017 to 06/30/2021

07/01/2016 to 06/30/2020

- Each table with a different analysis population and analysis
- Refer to the CHSD Analyses Overview and Risk Adjusted Calculation Spreadsheet in the IQVIA library

CHSD Report Analyses Overview

- Updated document posted (07/18/22)
- Details database processes
- Description of analysis
 - Inclusions / exclusions
 - Mortality analysis
 - Calculations
 - Handling missing data



CHSD Report Analyses Overview



Not specific to any one
harvest



Updated as processes
change

Mortality and Primary Procedure Assignment

- Mortality status in the reports determined by DCRI
- Despite primary procedure mismatches, the correct procedure will be analyzed
- Reflective in all tables

Mortality determined by:

- Mortality 30-day status
- Mortality status at Hospital discharge
- Mortality status at Database discharge

Fall 2021 Analysis Report Notes

- Previous STAT Mortality Scores and Categories
- Existing combination procedures
- Mortality calculation Episode of Care based
- Postop length of stay calculated using Database discharge date
- Covid-19 positive cases excluded

Question:

My mortality rate by
STAT Mortality
Category is different in
Table 1 and Table 16.
Please advise.

Table 1 and 16 have different inclusion/exclusion criteria

- Additional missing thresholds for data included in Table 16
- Refer to the Analyses Report Overview
- Refer to previous webinar dated 10/20/21

Risk Adjusted Reports: Mortality Analysis Table 1 vs. Table 16

Table 1

- Raw data
- Stratification by 1-yr & 4-yr analytic window
- Overall mortality
- Mortality stratified by STAT score

Table 16

- Raw + Risk adjusted data
- 4-yr analytic window
- Procedure must have an associated STAT score
- Model criteria applied – *new missing thresholds*

Mortality Analysis

Mortality analysis
fields complete

Eligible Operation
Index operation

Excludes:

- PDA ligations <2.5kg
- PM/ICD procedures <30 days
- Pectus repairs
- Bronchoscopy
- Organ procurement

- Date of admission
- Primary diagnosis
- Primary Procedure
- Mortality status at hospital DC, DB DC, 30 days post op

Table 1

- Overall mortality rate
- Mortality rate by STAT Category

Table 16

- Procedure STAT Category
- Age
- Sex male/female
- v.3.0 or later
- Neonates & infants Weight for age Z-score between -7.0 and 5.0

Question:

I have a patient excluded from the TGA lesion specific table. Please advise.

- Ensure the case at time of submission did not have any missing data required for analysis
- Check the primary procedure and diagnosis - Only the listed diagnosis & procedure combinations in the table are included in analysis
- Check criteria in the Analysis Report Overview and Calculation Spreadsheet
- Submit a ticket to ststechsupport@iqvia.com

Question:

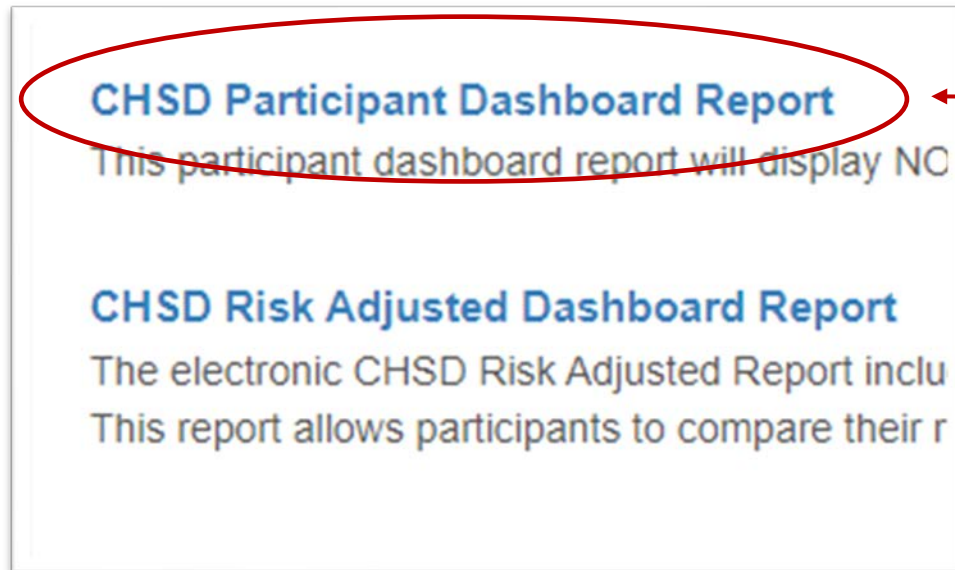
I have patients who underwent a benchmark operation where the postop LOS is longer than the table reported range. Please advise.

- Postop LOS calculation excludes patients who stay greater than 364 days post procedure
- Postop LOS utilizes the database discharge date
- Refer to the Analyses Report Overview

*Participant Unadjusted
Dashboard Clarification:*

STAT Scores

Participant Dashboard Update



CHSD Participant Dashboard Report
This participant dashboard report will display NC

CHSD Risk Adjusted Dashboard Report
The electronic CHSD Risk Adjusted Report inclu
This report allows participants to compare their r

Select the non-risk
adjusted dashboard
report

Participant Dashboard Update

Parameters

Time Period Procedures Age

Stat Category

<input checked="" type="checkbox"/> All
<input type="checkbox"/> Stat Category 1
<input type="checkbox"/> Stat Category 2
<input type="checkbox"/> Stat Category 3
<input type="checkbox"/> Stat Category 4
<input type="checkbox"/> Stat Category 5
<input type="checkbox"/> Not Assigned

STAT Mortality Categories/Scores are not yet updated

- Timeline for update TBD
- Primary procedure mismatch report is updated



IQVIA Update
Joe Brower

IQVIA Important Updates July 2022

The IQVIA development team is actively working on the below items for immediate resolution. A notification will be posted to provide further updates.

Risk Adjusted Report – Fall 2021 Harvest Report

STS-8576 – An error is appearing on Table 1 and Table 7 when selecting a result entry on the report. The error displays, *“Could not load on-demand data for Table(x)_CaseList.”*

Uploader

STS-8555 – The uploader is displaying a critical error on records that have a surgery date of 7/1/2022 or later. The application displays, *“Core date does not match any form version.”* Operation records prior to 7/1/2022 are not impacted and will upload as expected.

IQVIA Release Updates July 2022

The below item was released to production on the weekend of July 16

Missing Variable Report and Harvest Summary Report

STS-8311 – The report logic for the MT365STAT variable has been updated to include all records that have met the 1-year logic criteria.

- Previously the report only displayed operations that had updates via an upload submission. If the records did not have any updates after the 1-year criteria was met, they did not appear on the MVR.

STS-8448 – The MVR was displaying the ANESADVEVENTINT variable as missing even though the field was entered on the case form. This has been corrected.

IQVIA Release Updates July 2022

The below item was released to production on the weekend of July 16

Primary Procedure Report Update

STS-8301 – Primary Procedure Report incorrectly indicated that the Valve replacement, Pulmonic (PVR) (code 600) should be the selected primary for an operation where there was another code entered and had a higher STAT score assigned. This has been corrected.

STS-8289 – The STAT score was removed from procedure code 1772 Conduit Placement, Other. This code was deemed as Not Eligible to receive a STAT score.

IQVIA Update

Please note: Submitted tickets are currently under review and the IQVIA support team will follow up on resolution and/or target release confirmation.

The IQVIA Team is currently reviewing items that will be released in an upcoming release. Those items will be posted to the Notifications section.



Analysis Report Questions

- Please contact IQVIA Support
 - chsdttechsupport@iqvia.com
- STS/DCRI will be looped in as needed when tickets are escalated to Tier 2



Contact Information

Leigh Ann Jones, STS
National Database Manager,
Congenital and General
Thoracic

- Ljones@sts.org
- 312-202-5822

Database Operational
Questions

- STSDB@sts.org

Upcoming CHSD Webinars

User Group Call

- August 2 @ 12pm CT
- September 6 @ 12pm CT

Monthly Webinar

- August 16 @ 12pm CT
- September 20 @ 12pm CT



Open Discussion



Please use the Q&A Function.



We will answer as many questions as possible.



We encourage your feedback and want to hear from you!



STS National Database™

Trusted. Transformed. Real-Time.



THANK YOU FOR JOINING!