

Society of Thoracic Surgeons

Intermacros Quarterly Reports and Dashboard Webinar

January 20, 2022



STS National Database™
Trusted. Transformed. Real-Time.

The Intermacs Data Warehouse Team

Ryan Cantor, PhD, Statistician, Director of Reporting, Intermacs DCC

Rama Rudraraju, PhD, Director of Programming, Intermacs DCC

Brandon Singletary, PhD, KIRSO Data Analytics

Maceo Cleggett, BS, Clinical Data Analyst, Intermacs DCC

John Pennington, MSHI, Intermacs DCC



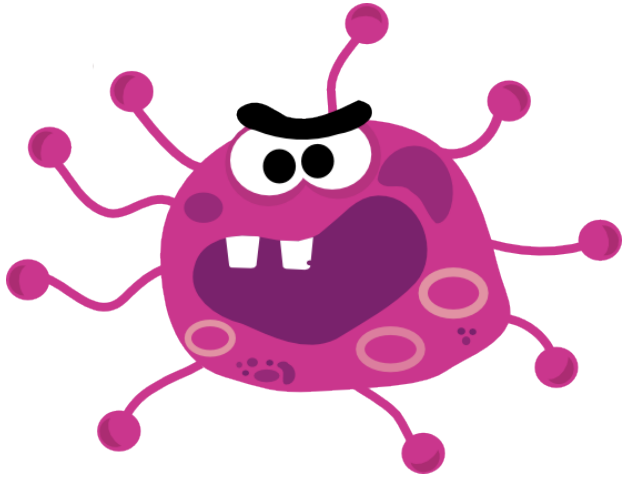
Intermacs Reporting and Dashboard Webinar

- Welcome and Introductions
- STS Updates



AGENDA





Covid -19 Update

- Tele visits encouraged
- QOL surveys may been done over the phone or by mail
- If follow-up visits are done outside of the visit window, please enter the last date of the follow-up date visit into the database
- **Sites have 30 days after the follow-up window due date to enter the data for the C-19 exception**



STS InterMACs Reporting Webinar

1/20/2022



Overview

- Dashboard
 - Current version
 - New features
- KM Tool
 - Current version
 - New features
- Usage Scenarios



Dashboard

- Current version demo
- Upcoming features in the dashboard
 - Navigation
 - New filter
 - New metric
 - New AE tabs
- Usage statistics
 - Number of hospitals that viewed dashboard at least once: 152
 - Number of hospitals that viewed more than 3 times: 101
- Survey



KM tool

- KM tool
 - Overview
 - Upcoming changes to the KM tool
 - Confidence interval
 - Table with risks at various time points
 - Usage statistics
 - Number of hospitals that viewed KM tool at least once: 53
 - Number of hospitals that viewed KM tool more than 3 times: 18
 - Number of unique hospitals that generated KM using the tool: 24
 - Number of KMs generated: 173
 - Highest number of KMs generated by a single hospital till date: 33



Dashboard and KM Tool Usage Scenarios

- Scenarios for using of the dashboard or the KM tool
 - Share at upcoming webinar



Contact Information

Kathryn Hollifield, BSN, RN STS National Database Manager, Intermacs and Pedimacs

- khollifield@sts.org

Patricia Potter, BSN, RN, Intermacs Data warehouse Clinical Informatics

- pkpotter@uabmc.edu

Database Operational Questions

- intermacsfaq@sts.org

Resources

- [STS National Database Webpage](#)
- [Intermacs and Pedimacs Webpage](#) (All things Intermacs and Pedimacs, Database user guides, Data collection forms, QOL surveys, FAQs, V 6 Training Video, Research opportunities)
- Intermacs-reports@uabmc.edu (Reporting questions, Uploader, DQR, Missing Variable, Dashboard, Password and Login)
- [Updated Participant Contact Form](#)
- [DQ Report Validation Form](#)



Upcoming Intermacros Webinars

User Group Webinar

- January 26th @ 1pm CT

Dashboard Analytics and Updated Adverse Events

- TBD



Open Discussion



Please use the Q&A Function.



We will answer as many questions as possible.



We encourage your feedback and want to hear from you!

STS National Database™

Trusted. Transformed. Real-Time.

THANK YOU FOR JOINING!