



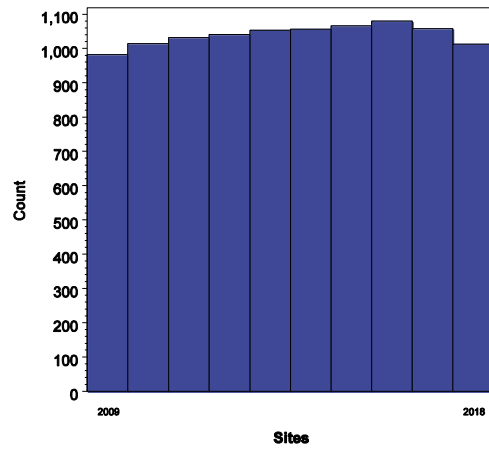
Executive Summary

Participant 10603
STS Period Ending 09/30/2018

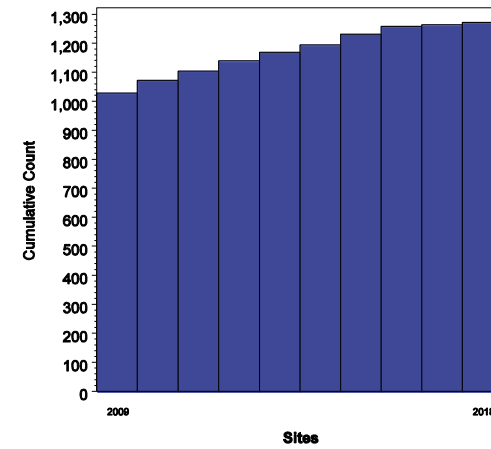
2018 is a partial year: Jan 2018 - Sep 2018



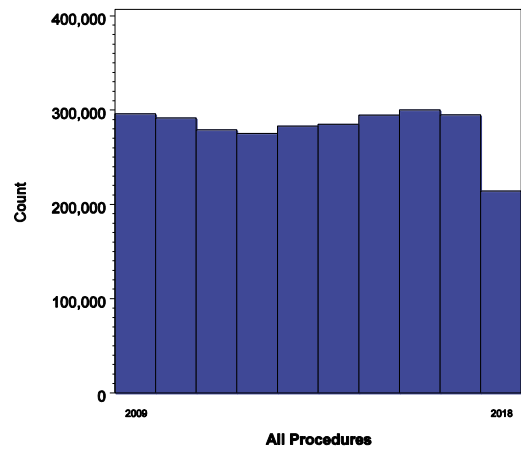
Number of Participating Sites
Yearly Count



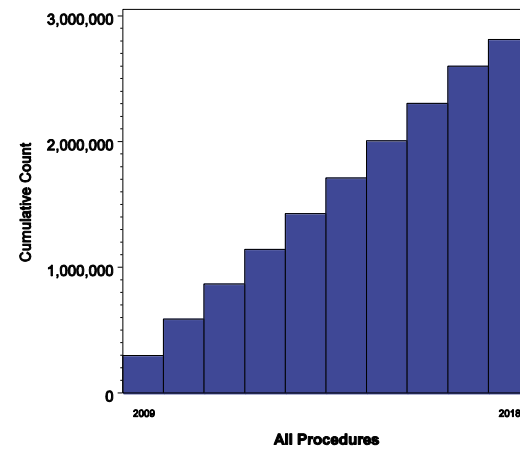
Number of Participating Sites
Cumulative over last 10 years



Number of Procedures
Yearly Count



Number of Procedures
Cumulative over last 10 years





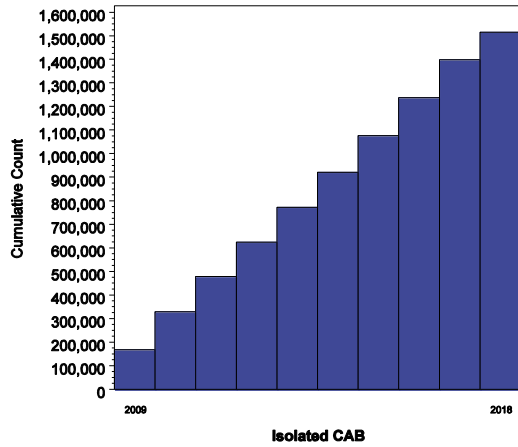
Executive Summary

Participant 10603
STS Period Ending 09/30/2018

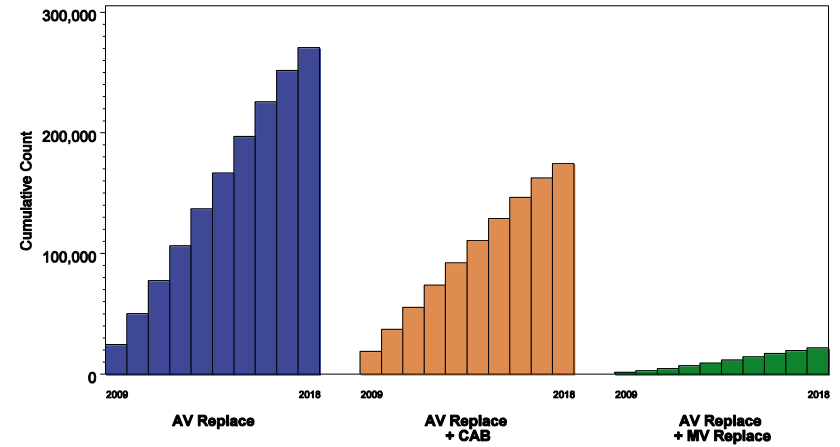


2018 is a partial year: Jan 2018 - Sep 2018

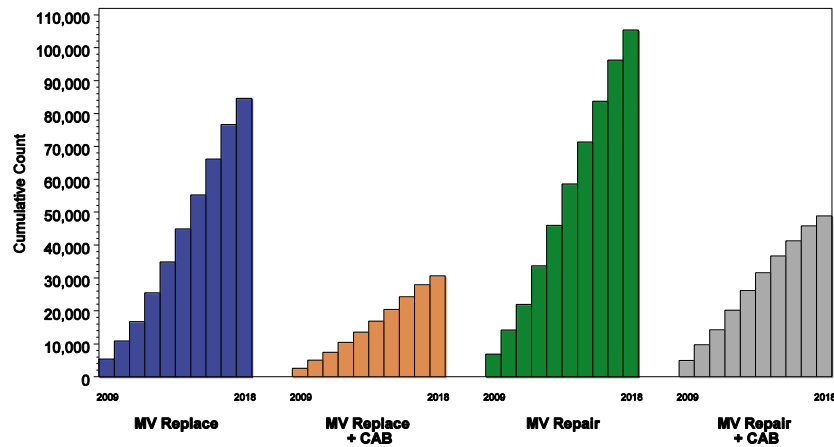
Number of Isolated CABG Procedures
 Cumulative over last 10 years



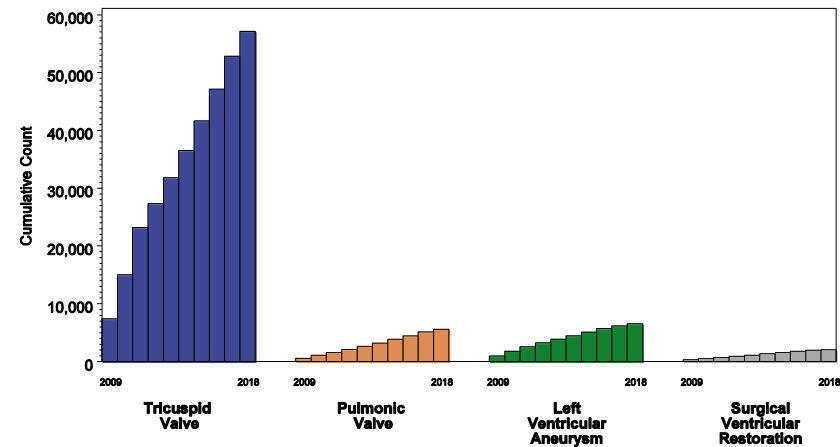
Number of Aortic Valve Procedures
 Cumulative over last 10 years



Number of Mitral Valve Procedures
 Cumulative over last 10 years



Number of Selected Other Cardiac Procedures
 Cumulative over last 10 years





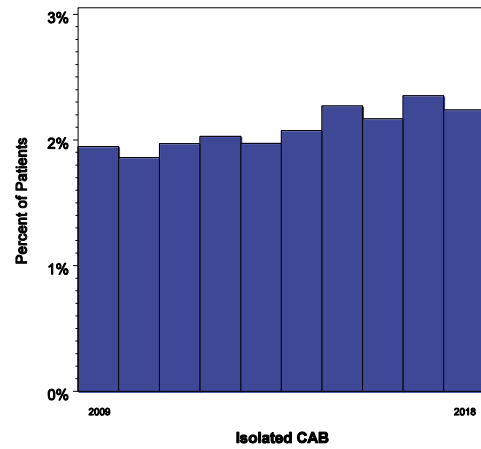
Executive Summary

Participant 10603
STS Period Ending 09/30/2018

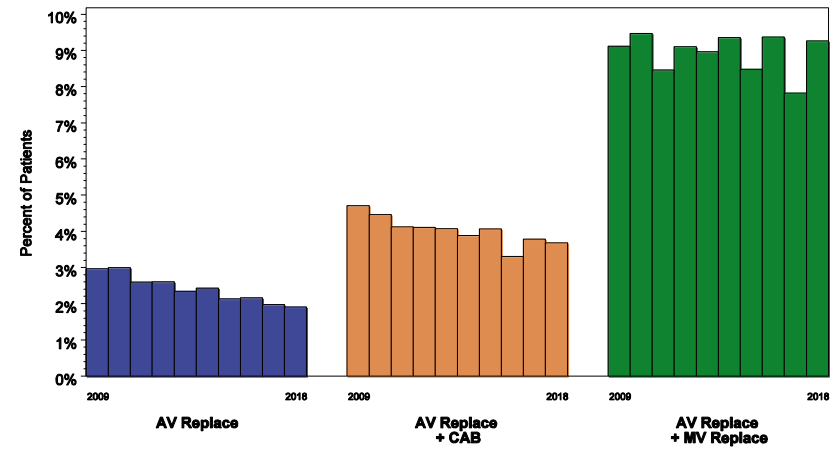


2018 is a partial year: Jan 2018 - Sep 2018

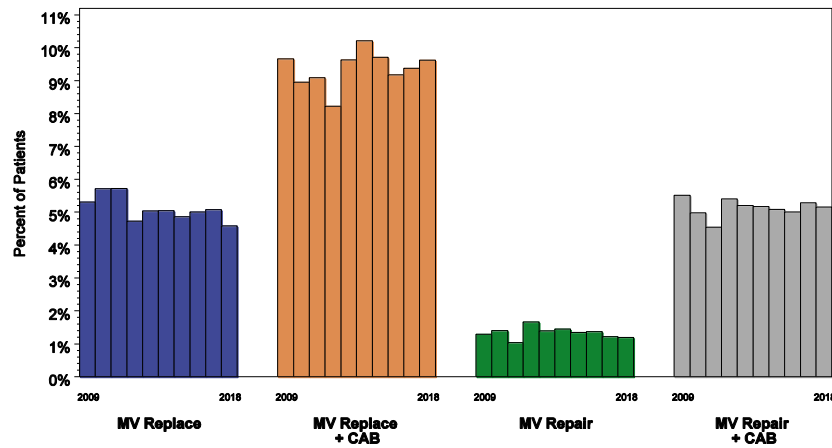
Unadjusted Isolated CABG Operative Mortality
Yearly over last 10 years



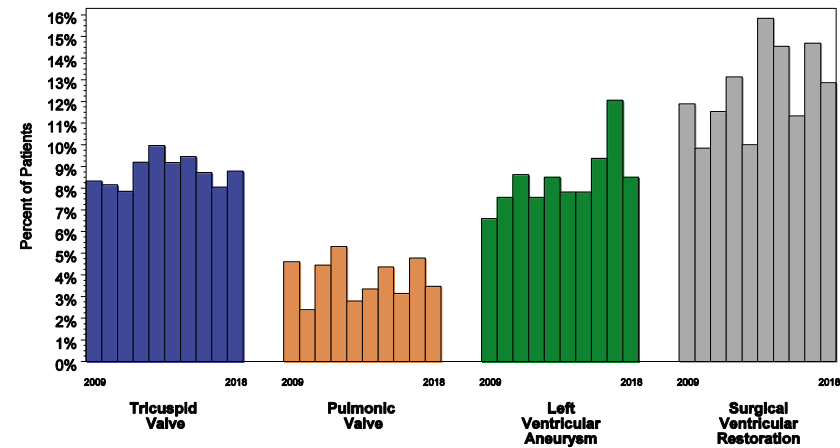
Unadjusted Aortic Valve Operative Mortality
Yearly over last 10 years



Unadjusted Mitral Valve Operative Mortality
Yearly over last 10 years



Unadjusted Other Cardiac Operative Mortality
Yearly over last 10 years





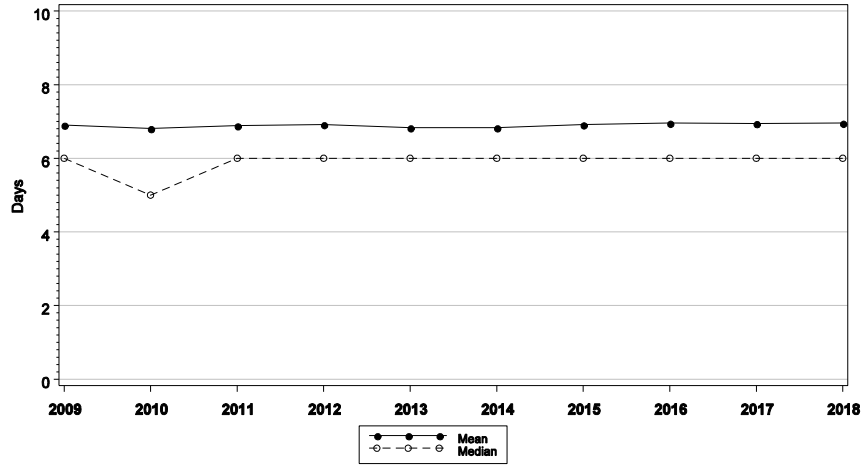
Executive Summary

Participant 10603
STS Period Ending 09/30/2018

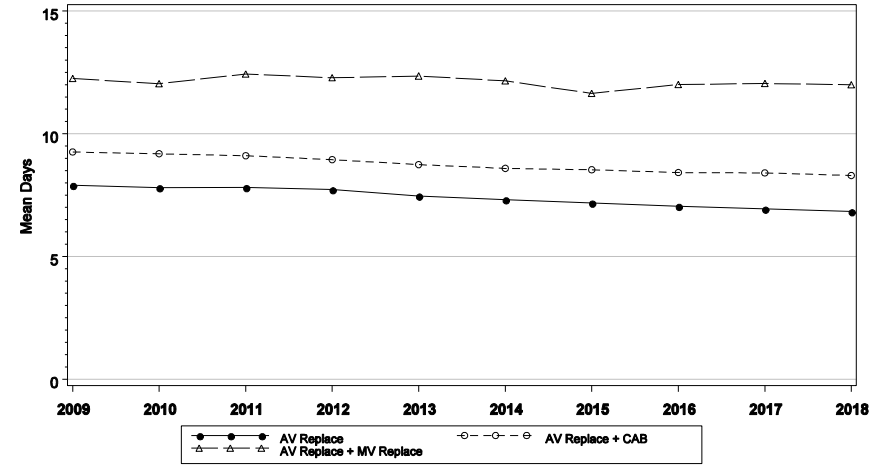


2018 is a partial year: Jan 2018 - Sep 2018

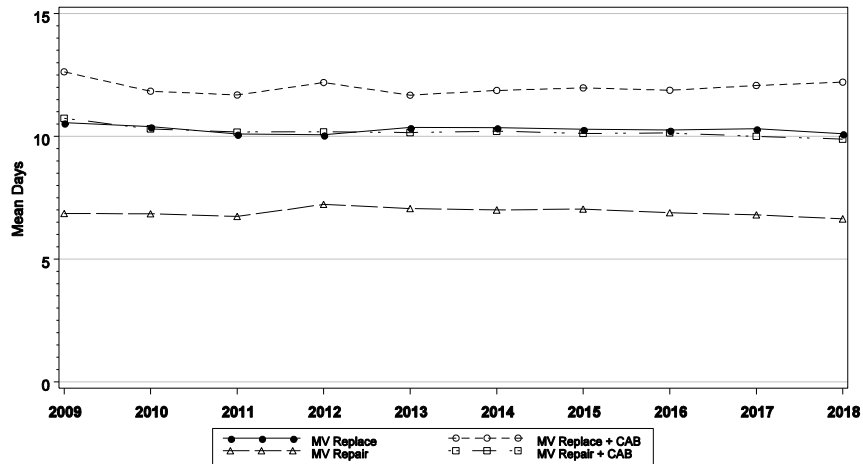
Post-Procedure LOS for Isolated CABG Procedures



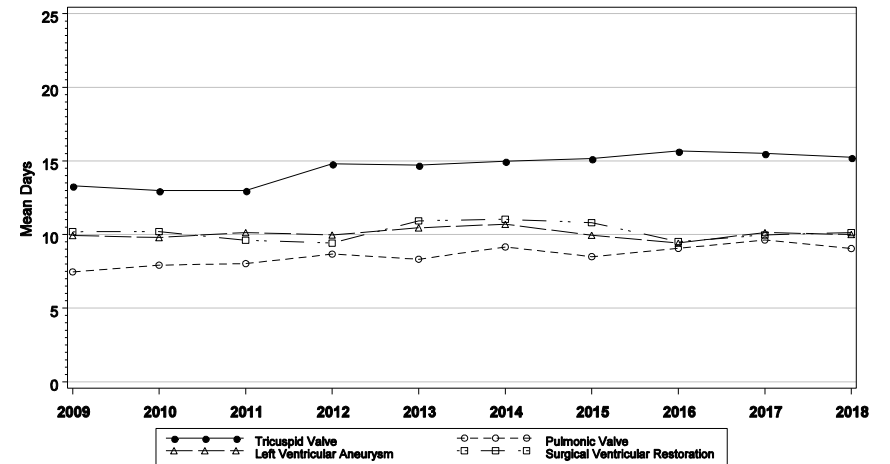
Post-Procedure LOS for Aortic Valve Procedures



Post-Procedure LOS for Mitral Valve Procedures



Post-Procedure LOS for Other Cardiac Procedures





Executive Summary



Participant 10603
STS Period Ending 09/30/2018

2018 is a partial year: Jan 2018 - Sep 2018

	2009	2010	2011	2012	2013	2014	2015	2016	2017	2018
Yearly Number of Sites in Analysis	982	1,014	1,032	1,041	1,053	1,056	1,066	1,080	1,058	1,013
Yearly Overall Procedure Count	295,774	291,410	279,007	275,255	283,092	284,930	294,554	300,017	294,792	213,944
Major Procedures										
Isolated CABG	167,329	160,819	149,649	146,520	147,894	148,178	155,529	161,089	161,206	116,802
Isolated Aortic Valve Replacement	24,501	25,620	27,257	28,810	30,684	29,827	30,275	28,696	26,087	18,905
Isolated Mitral Valve Replacement	5,336	5,496	5,877	8,744	9,383	10,005	10,369	10,953	10,424	8,032
Aortic Valve Replacement + CABG	18,823	18,344	18,214	18,389	18,586	18,386	18,104	17,652	16,080	11,907
Mitral Valve Replacement + CABG	2,589	2,446	2,322	3,017	3,137	3,380	3,554	3,774	3,724	2,640
Aortic + Mitral Valve Replacements	1,503	1,468	1,609	2,208	2,355	2,565	2,559	2,734	2,545	2,009
Mitral Valve Repair	6,817	7,300	7,835	11,714	12,329	12,557	12,796	12,383	12,478	9,149
Mitral Valve Repair + CABG	4,898	4,759	4,596	5,936	5,997	5,456	5,060	4,580	4,545	3,025
Not Classified Above	63,978	65,158	61,648	49,917	52,727	54,576	56,308	58,156	57,703	41,475
Incidence of Other Procedures										
Pulmonic Valve	543	543	472	547	537	568	620	605	670	490
Tricuspid Valve	7,369	7,625	8,186	4,114	4,488	4,730	5,125	5,491	5,702	4,297
Ventricular Assist Device	1,863	2,434	3,168	3,517	4,119	4,504	4,931	5,129	4,555	2,676
LVA - Left Ventricular Aneurysm Repair	925	831	788	687	600	627	627	597	506	341
VSD - Ventricular Septal Defect Repair	625	637	670	641	606	721	768	849	806	572
ASD - Atrial Septal Defect Repair	4,285	4,230	3,855	2,620	2,711	2,941	2,951	3,008	3,201	2,362
Batista	34	42	17	-	-	-	-	-	-	-
Surgical Ventricular Restoration	303	193	208	198	210	221	220	203	211	101
Congenital Defect Repair	1,579	1,544	1,398	1,230	1,217	1,014	918	986	952	699
Transmyocardial Laser Revascularization	2,033	2,011	1,059	222	198	195	183	140	106	63
Cardiac Trauma	297	287	274	262	255	258	279	251	236	165
Cardiac Transplant	1,226	1,367	1,356	1,411	1,591	1,723	1,832	2,174	2,063	1,606
Arrhythmia Correction Surgery	957	892	819	682	718	621	614	614	584	436
Atrial Fibrillation Correction Surgery	16,593	16,825	17,568	21,191	24,667	23,751	21,161	21,565	22,060	17,429
Afib + Analyzed Procedure ¹	-	-	-	14,270	16,784	15,886	13,932	14,327	14,607	11,724
Afib + Non-analyzed Procedure ¹	-	-	-	5,840	6,629	6,747	5,848	5,831	5,913	4,577
Afib only Procedure	-	-	-	1,081	1,254	1,118	1,381	1,407	1,540	1,128
Aortic Aneurysm	13,127	13,947	12,878	11,764	12,513	12,648	13,707	15,080	14,364	10,089
Ascending Aorta	11,431	12,140	10,633	9,171	9,791	10,061	11,288	12,453	9,798	5,600
Aortic Arch	3,183	3,501	3,155	2,859	3,102	3,292	3,916	4,479	3,789	2,127
Descending Aorta	1,154	1,281	1,047	755	769	874	1,086	1,246	909	337
Thoracoabdominal Aorta	631	708	660	654	740	661	604	746	461	190
Carotid Endarterectomy	1,884	1,775	1,581	1,381	1,374	1,302	1,263	1,164	1,081	713
Other Vascular	1,566	1,500	1,366	1,195	1,230	1,282	1,364	1,289	1,159	681
Other Thoracic	1,663	1,663	1,544	1,542	1,611	1,688	1,647	1,798	1,753	1,174

¹Refer to PROC ID Chart to determine what is an analyzed vs. non-analyzed procedure