



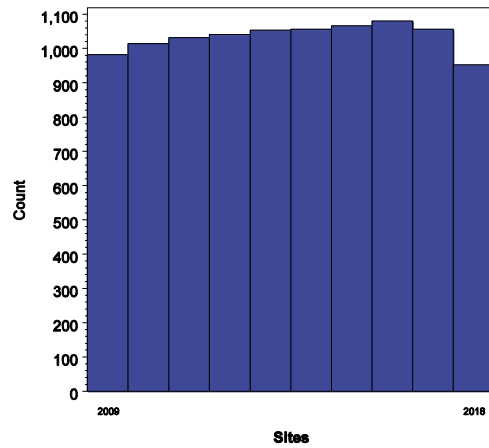
Executive Summary



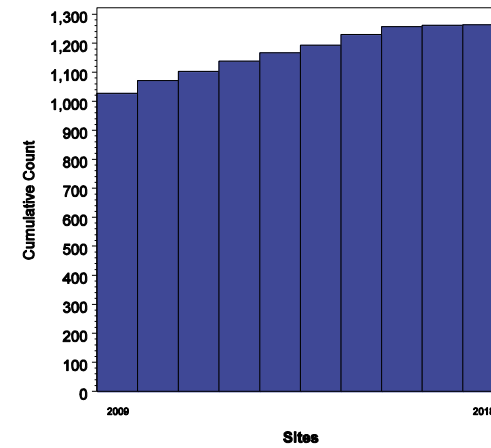
Participant 99999
STS Period Ending 03/31/2018

2018 is a partial year: Jan 2018 - Mar 2018

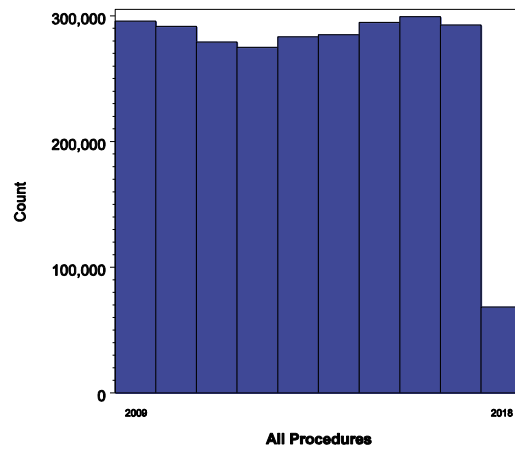
Number of Participating Sites
Yearly Count



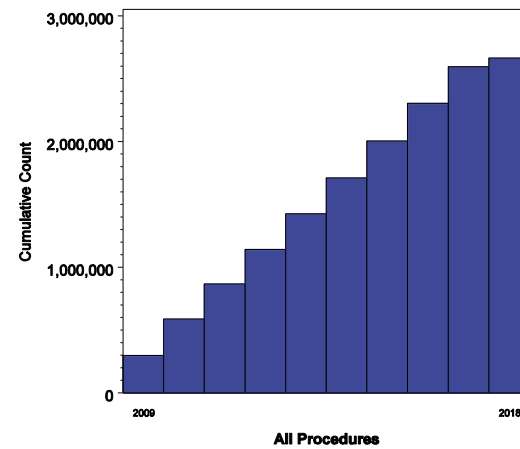
Number of Participating Sites
Cumulative over last 10 years



Number of Procedures
Yearly Count



Number of Procedures
Cumulative over last 10 years





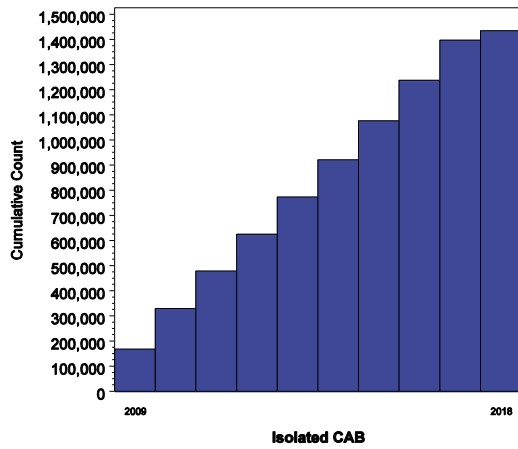
Executive Summary

Participant 9999
STS Period Ending 03/31/2018

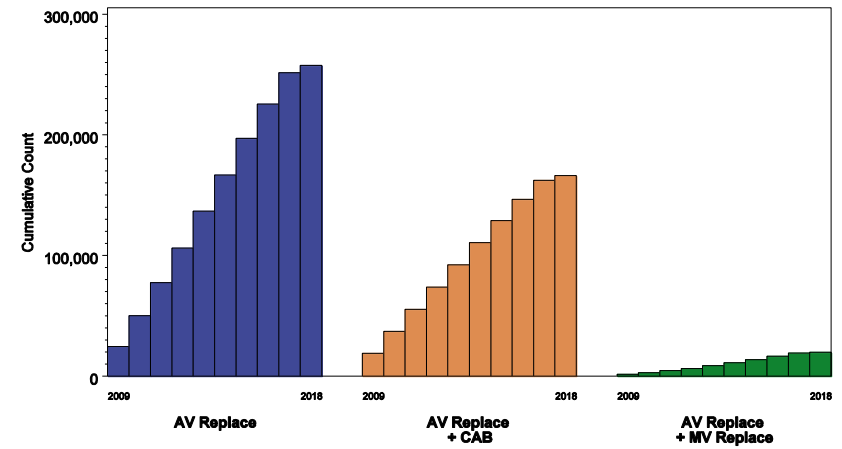


2018 is a partial year: Jan 2018 - Mar 2018

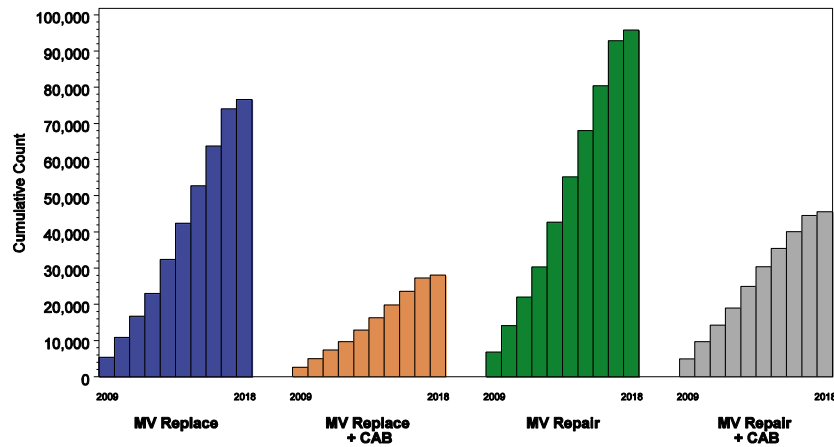
Number of Isolated CABG Procedures
 Cumulative over last 10 years



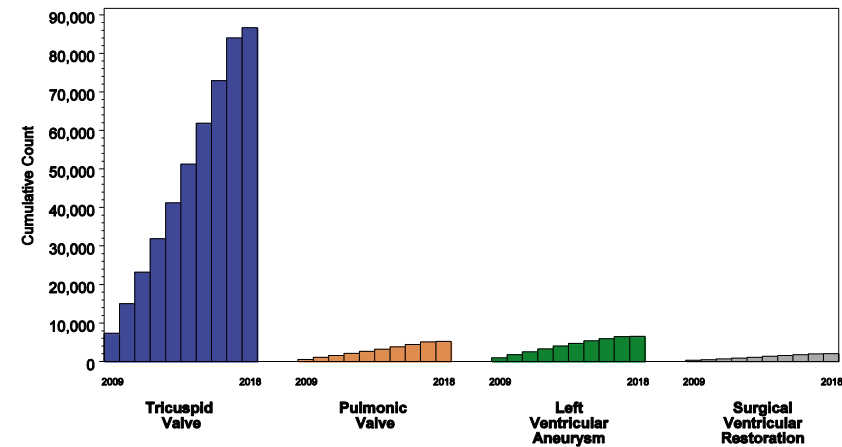
Number of Aortic Valve Procedures
 Cumulative over last 10 years



Number of Mitral Valve Procedures
 Cumulative over last 10 years



Number of Selected Other Cardiac Procedures
 Cumulative over last 10 years





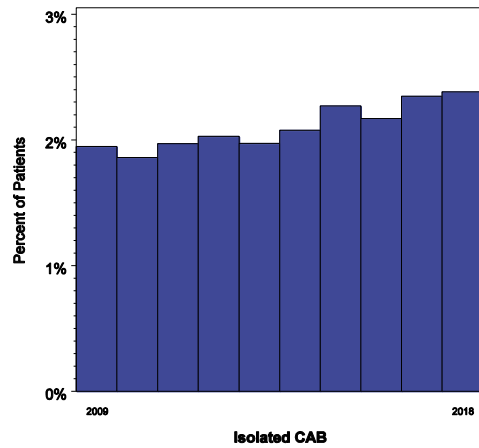
Executive Summary

Participant 99999
STS Period Ending 03/31/2018

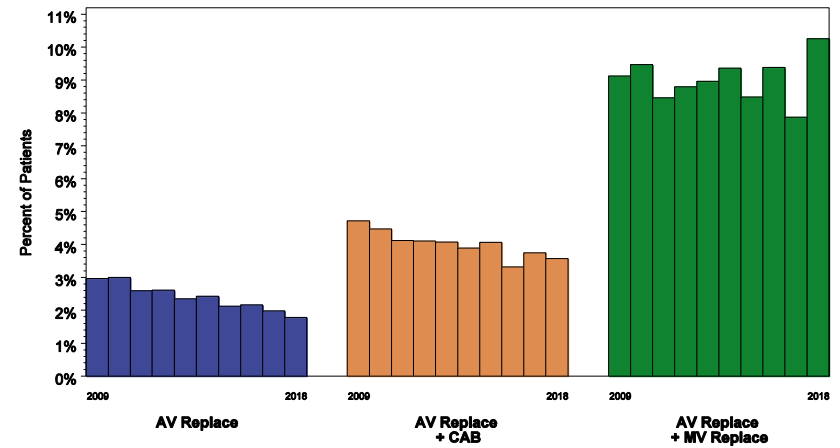


2018 is a partial year: Jan 2018 - Mar 2018

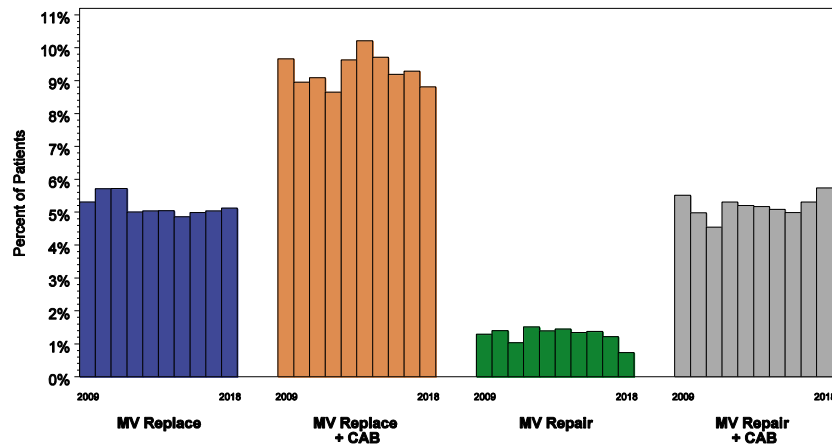
Unadjusted Isolated CABG Operative Mortality
Yearly over last 10 years



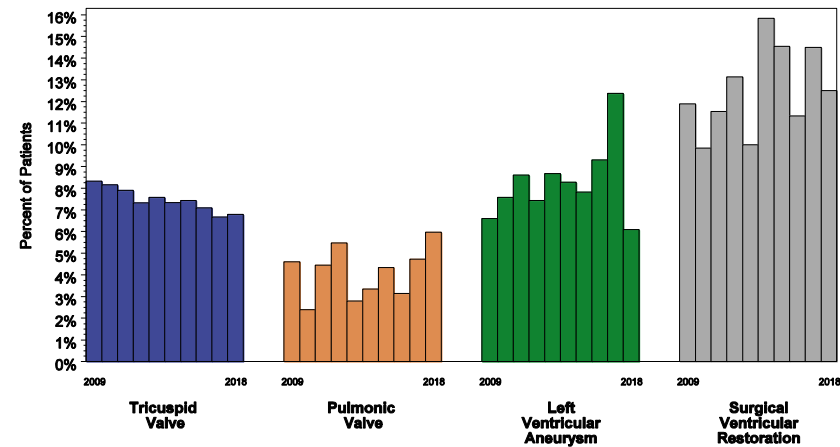
Unadjusted Aortic Valve Operative Mortality
Yearly over last 10 years



Unadjusted Mitral Valve Operative Mortality
Yearly over last 10 years



Unadjusted Other Cardiac Operative Mortality
Yearly over last 10 years





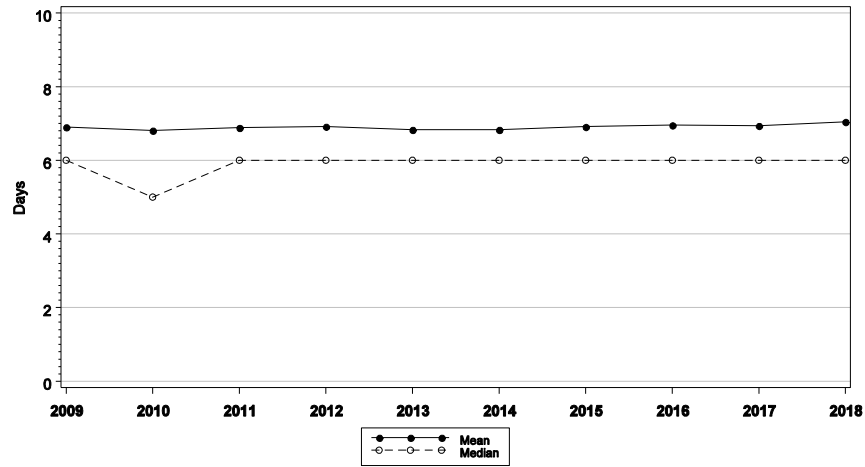
Executive Summary

Participant 99999
STS Period Ending 03/31/2018

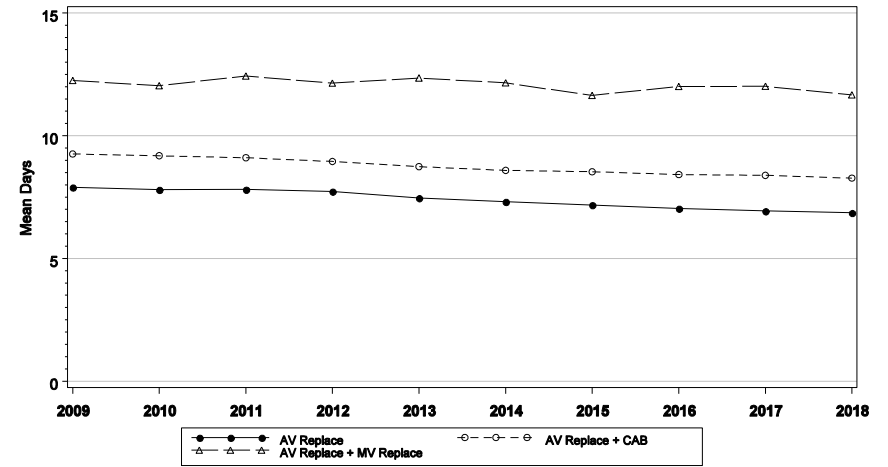


2018 is a partial year: Jan 2018 - Mar 2018

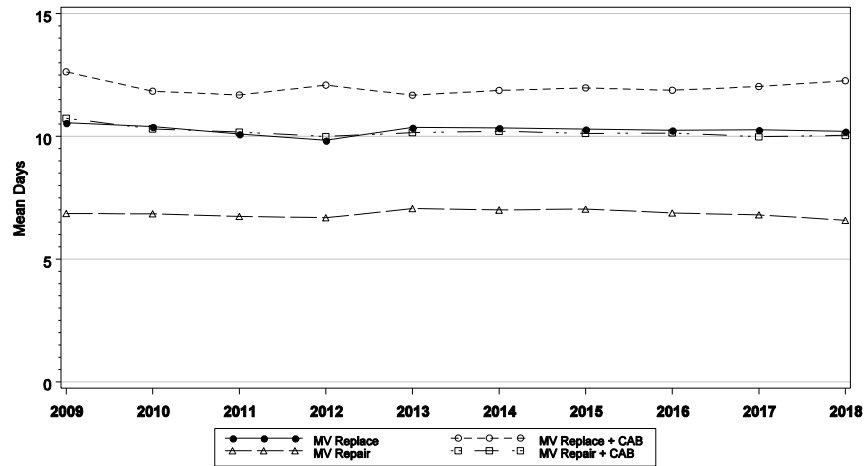
Post-Procedure LOS for Isolated CABG Procedures



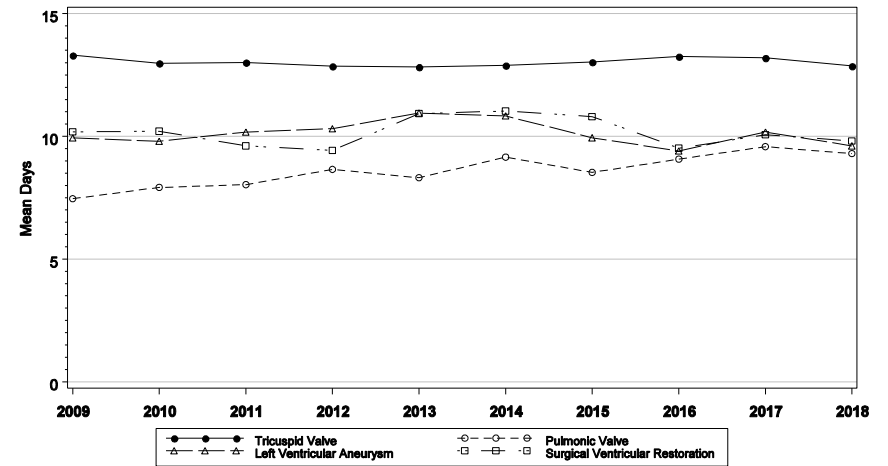
Post-Procedure LOS for Aortic Valve Procedures



Post-Procedure LOS for Mitral Valve Procedures



Post-Procedure LOS for Other Cardiac Procedures





Executive Summary



Participant 99999
STS Period Ending 03/31/2018

2018 is a partial year: Jan 2018 - Mar 2018

	2009	2010	2011	2012	2013	2014	2015	2016	2017	2018
Yearly Number of Sites in Analysis	982	1,014	1,032	1,041	1,053	1,056	1,066	1,080	1,056	952
Yearly Overall Procedure Count	295,774	291,410	279,007	275,008	283,092	284,934	294,552	299,270	292,550	68,197
Major Procedures										
Isolated CABG	167,329	160,819	149,649	146,461	147,894	148,179	155,528	160,704	160,160	37,142
Isolated Aortic Valve Replacement	24,501	25,620	27,257	28,778	30,684	29,829	30,275	28,634	25,940	5,966
Isolated Mitral Valve Replacement	5,336	5,496	5,877	6,295	9,383	10,006	10,369	10,941	10,332	2,576
Aortic Valve Replacement + CABG	18,823	18,344	18,214	18,374	18,586	18,385	18,104	17,604	15,971	3,834
Mitral Valve Replacement + CABG	2,589	2,446	2,322	2,383	3,137	3,380	3,554	3,765	3,706	829
Aortic + Mitral Valve Replacements	1,503	1,468	1,609	1,661	2,355	2,565	2,559	2,728	2,530	624
Mitral Valve Repair	6,817	7,300	7,835	8,395	12,329	12,556	12,796	12,351	12,388	3,016
Mitral Valve Repair + CABG	4,898	4,759	4,596	4,708	5,997	5,456	5,060	4,574	4,525	1,029
Not Classified Above	63,978	65,158	61,648	57,953	52,727	54,578	56,307	57,969	56,998	13,181
Incidence of Other Procedures										
Pulmonic Valve	543	543	472	548	537	568	622	605	656	151
Tricuspid Valve	7,369	7,625	8,203	8,655	9,330	10,053	10,601	11,123	11,007	2,639
Ventricular Assist Device	1,863	2,434	3,202	3,549	4,166	4,857	5,827	5,810	5,001	852
LVA - Left Ventricular Aneurysm Repair	925	831	790	781	703	677	627	591	501	115
VSD - Ventricular Septal Defect Repair	625	637	672	700	652	752	768	846	799	172
ASD - Atrial Septal Defect Repair	4,285	4,230	4,687	5,194	5,428	5,899	6,004	6,224	6,305	1,477
Batista	34	42	17	-	-	-	-	-	-	-
Surgical Ventricular Restoration	303	193	208	198	210	221	220	203	207	32
Congenital Defect Repair	1,579	1,544	1,564	1,702	1,675	1,309	1,031	1,087	1,005	243
Transmyocardial Laser Revascularization	2,033	2,011	1,755	1,723	1,494	1,465	1,399	1,220	992	205
Cardiac Trauma	297	287	280	289	267	269	279	251	233	56
Cardiac Transplant	1,226	1,367	1,356	1,387	1,591	1,723	1,830	2,166	2,044	408
Arrhythmia Correction Surgery	1,211	1,159	1,039	921	943	851	806	787	724	177
Atrial Fibrillation Correction Surgery	16,593	16,825	17,568	21,177	24,667	23,751	21,161	21,506	21,919	5,730
Aortic Aneurysm	13,127	13,947	12,882	11,755	12,524	12,661	13,716	15,056	11,051	1,695
Ascending Aorta	11,431	12,140	10,633	9,157	9,791	10,059	11,283	12,421	9,513	1,614
Aortic Arch	3,183	3,501	3,155	2,858	3,102	3,292	3,916	4,460	3,678	633
Descending Aorta	1,154	1,281	1,047	755	769	874	1,086	1,243	893	91
Thoracoabdominal Aorta	631	708	660	653	740	661	604	744	447	44
Carotid Endarterectomy	1,884	1,775	1,581	1,396	1,388	1,317	1,265	1,165	1,073	252
Other Vascular	1,566	1,500	1,383	1,253	1,304	1,375	1,486	1,407	1,216	238
Other Thoracic	1,663	1,663	1,556	1,599	1,685	1,741	1,687	1,821	1,783	428