

Society of Thoracic Surgeons

Congenital Heart Surgery Database User Group

August 25, 2020



STS National Database™
Trusted. Transformed. Real-Time.

Agenda

- Welcome and Introductions
- Housekeeping
- STS Update
- IQVIA Update
- Q&A - Please submit using the Q&A function

Housekeeping

August Training Manual

- September updates coming next week

New Data Manager Webinar Series

- August 27 @11am Central

A large, abstract blue watercolor splash graphic on the left side of the slide, with various shades of blue and white ink-like textures.

CHSD Spring/Fall 2020 Harvest Update

- Spring/Fall Harvests combined for 2020
 - Email notification sent Wednesday, August 5th
 - Submission deadline: Friday, October 16, 2020
 - Opt-out date: Tuesday, October 20, 2020
- ONE analysis/report for 2020
 - **Surgery Dates included: 7/1/2016 - 6/30/2020**
- STS Public Reporting will resume in 2021
 - To include data from this combined 2020 harvest

In the works – Primary Procedure Mismatch

- Primary Procedure Determination Rules are outlined in the Report Overview/Interpretation Guide
 - STS will be posting these rules out on the STS website
 - To be posted under Data Collection Additional Resources section on CHSD page (version 3.41)

e2. Determination of the Primary Procedure of an Operation and Classification of Multiple-Procedure Operations

Beginning with the Fall 2014 STS Congenital Heart Surgery Database Feedback Report, a new methodology was implemented to determine the Primary Procedure for a given operation. This methodology was updated for the Fall 2015 STS Congenital Heart Surgery Database Feedback Report and additional updates were implemented at the time of the Fall 2016 STS Congenital Heart Surgery Database Feedback Report. The updated methodology is described below:

The guiding principle is that the Primary Procedure for a given operation is determined by selecting the procedure with the highest STAT Score.

Multiple procedures will be mapped to available combination procedure codes, just as before. Individual procedures that make up the combination procedures will not be removed but will remain as Secondary Procedures. These individual procedures that make up the combination procedures will not be considered for primary procedure determination.

If there is a tie for highest STAT Score:

- a. The procedure indicated as the primary by the participant will become the primary procedure.
- b. If no procedure was selected as primary by the participant; the first one appearing in the procedures dataset will be selected as the primary procedure (this may, or may not, be the first procedure entered by the participant).

EXCEPTIONS TO THE ABOVE-STATED RULE:

In the works – Mortality Eligibility Summary

- If any one of the variables listed in the table has a missing/unknown value, an operation record is considered 'missing' for the purposes of mortality analysis. **If more than 10% of the overall** operation records for the **report time period** (this includes historical data submitted during previous data harvests) for a given database Participant are 'missing', then that Participant's data will be excluded from the mortality analysis.
- ** Please note that primary procedure selected in your software may not match the primary procedure ultimately assigned by the DCRI during analysis*
- *** 'unknown' value treated as missing*

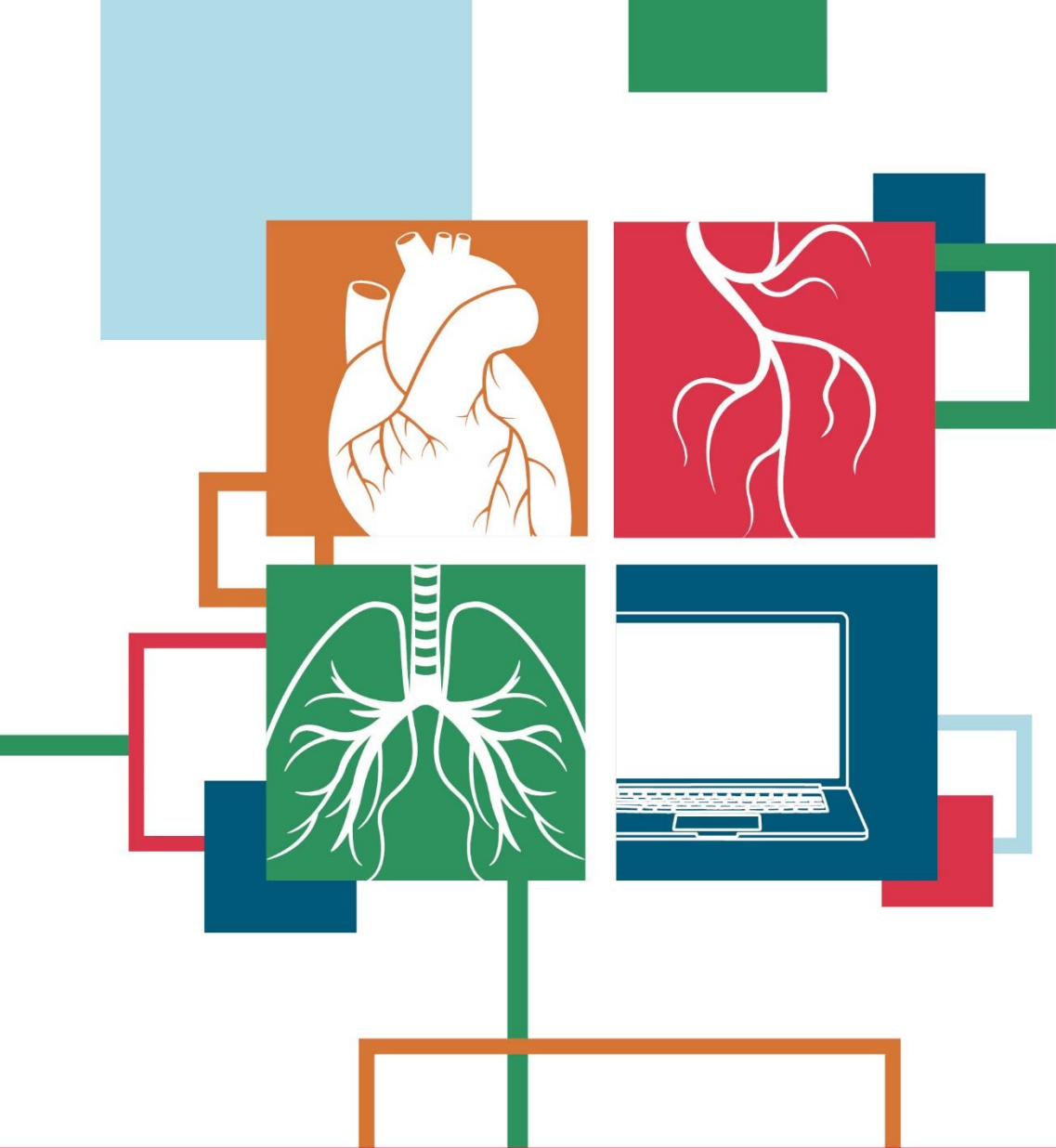
| VARIABLE | Version 3.22 (SeqNo) | Version 3.3 (SeqNo) | Version 3.41 (SeqNo) |
|---|----------------------|----------------------|----------------------|
| Date of admission | AdmitDt (780) | AdmitDt (780) | AdmitDt (780) |
| Date of Surgery | SurgDt (790) | SurgDt (790) | SurgDt (790) |
| Operation Type | OpType (1002) | OpType (1056) | OpType (1056) |
| Primary Diagnosis | PrimDiag (900) | PrimDiag (900) | PrimDiag (900) |
| Primary Procedure* | PrimProc (940) | PrimProc (940) | PrimProc (940) |
| Database Discharge Status (Alive, Dead)** | MtDBDisStat (4260) | MtDBDisStat (4260) | MtDBDisStat (4260) |
| 30-day Status (Alive, Dead)** | Mt30Stat (4300) | Mt30Stat (4300) | Mt30Stat (4300) |
| Mortality Status at Hospital Discharge | MtHospDisStat (4230) | MtHospDisStat (4230) | MtHospDisStat (4230) |

In the works – Mortality Eligibility Summary

- The STS is making a concerted effort to improve data completeness for operative mortality. **Therefore, in order to assure the highest level of accuracy when reporting operative mortality, additional data thresholds are implemented to determine eligibility for a composite score (star rating):**
- For all cases performed from January 1, 2015 through December 31, 2015, the operative mortality fields must not have more than 10% missing.
- For all cases performed from January 1, 2016 through December 31, 2016, the operative mortality fields must not have more than 5% missing.
- For all cases performed on or after January 1, 2017, the operative mortality fields must not have more than 2% missing.
- If one or more of the operative mortality fields (**MtDBDisStat**, **Mt30Stat**) is missing or coded as "unknown", the record will be considered incomplete. Participants who do not meet the operative mortality related data completeness thresholds for a particular harvest will NOT be eligible to receive a composite score (star rating).

Congenital Heart Surgery Database 3.3 and 3.41

- **Mortality Status at Hospital discharge (4230)**
- **Mortality Status at Database Discharge (4260)**
- **Status at 30 days after surgery (4300)**



ADVANCES IN QUALITY & OUTCOMES: A Data Managers Meeting

September 29 – October 2, 2020 ■ VIRTUAL



STS National Database[™]
Trusted. Transformed. Real-Time.



ADVANCES IN QUALITY & OUTCOMES:
A Data Managers Meeting
September 29 – October 2, 2020 ■ VIRTUAL

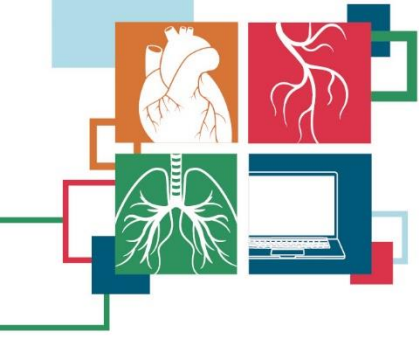
**Receive Early Bird
Registration
Pricing through
Monday,
September 7, 2020.**

Pricing

| | Member | | Non-Member | |
|--|------------|---------------|------------|---------------|
| | Early Bird | After Sept. 7 | Early Bird | After Sept. 7 |
| Tuesday, September 29: Intermacs/Pedimacs | \$75 | \$150 | \$100 | \$200 |
| Wednesday, September 30: General Thoracic | \$75 | \$150 | \$100 | \$200 |
| Thursday, October 1: Adult Cardiac | \$75 | \$150 | \$100 | \$200 |
| Friday, October 2: Congenital | \$75 | \$150 | \$100 | \$200 |
| Multiday or All Days | \$150 | \$300 | \$200 | \$400 |



STS National Database™
Trusted. Transformed. Real-Time.



ADVANCES IN QUALITY & OUTCOMES: A Data Managers Meeting

September 29 – October 2, 2020 ■ VIRTUAL

On the AQO Webpage you will find the following information:

- Request Justification Letter
- AQO Overall Objectives
- Preliminary Program
- Link to Registration or Mail-In Form
- Link to Abstract Submission

Contact **Emily Conrad** at econrad@sts.org with any Questions.

Continuing Education Credits

STS is partnering with Corexcel to offer Nursing CEs and Perfusion CEUs. The number of available CEs and instructions for claiming credit will be shared closer to the event.

Virtual Platform

AQO will offer both on-demand and live sessions. There will be an opportunity to ask questions through a Q&A function.



STS National Database[™]
Trusted. Transformed. Real-Time.

IQVIA Update

Joe Brower & Melanie Bent



IQVIA Update – August 2020

The below issue was resolved and the fix was deployed Aug. 22, 2020

- **(RESOLVED)** STS-3249 – Uploader triggering critical error on the AntifibtranexInfRatedata variable if decimal values are uploaded for this field

September 2020 – Upcoming Release Update

Items below targeted for release in September 12, 2020

Missing Variable Report

- STS-3356 – CHSD Missing Variable Report displaying MT365STAT variable incorrectly – 1 year logic should be applied
- STS-3389 – CHSD Chromosomal Abnormality – Other –Specify is missing, updated logic required to validate on demodataversion
- STS-3501 – CHSD Dashboard – update logic to exclude cases in the missing percent calculation for the operative mortality variable if the patient still in hospital variable is set to Yes
- STS-3641 – CHSD Dashboard Report – OpType section is no longer appearing in the dashboard

Issues Under Review

- STS-3527 – Uploader showing critical errors, mismatch on uploader case count (not impacting all sites)
- STS-3560 – CHSD MVR – Surgeon Name displaying as missing but information is listed in the case (not impacting all sites) – **Identified root cause – specific to participant site**
- STS-3565 – CHSD MVR Fields not reflected on MVR (CPBTm and more)
- STS-3523 – CHSD DQR – Intubation Date/Time Error (not impacting call sites) (**RESOLVED, error not appearing**)
- STS-3407 – CHSD MVR indicates Valve Explant Model #4 variable is missing, (ValEx4) parent value should be considered
- STS-3225 – CHSD Missing Variable Report displaying Autologous Transfusion
- STS-3604 – CHSD MVR Report Variables (site specific questions)
- STS-3587 – TRANSFUSBLDPRODGT24 Missing Variable appearing when answer is set to No

September 2020 – Upcoming Enhancements

Items below targeted for release in September 12, 2020

Update for Existing Reports

- STS-3425 - CHSD MVR and Dashboard Reports – Updating the Premature Birth label

New Reports

- STS-3545 – Case Eligibility for Inclusion in Mortality Analysis
- STS-2530 – Primary Procedure Mismatch Report

Upcoming CHSD Reports



*** September 2020**

Case Eligibility for Inclusion in Mortality Analysis



*** September 2020**

Primary Procedure Mismatch Report



Risk Adjusted
Dashboard

(based on DCRI
Risk Adjusted
Harvested Data)



IQVIA New Reports

Rhonda Murphy



Operational Reports – Primary Procedure Mismatch and Mortality Eligibility Summary

Welcome,
Rhonda Murphy

Currently Viewing
Congenital Heart Surgery Database
DEMO-99999 – 99999

PLATFORM

Cases

Upload

Form Management

Notifications

ANALYTICS

Operational Reports

RESOURCES

Library

ACCOUNT

My Account

Log out

Operational Reports

Missing Variable Report

[Missing Variable Report](#)
This report identifies important field-specific data quality issues that affect the completeness of your harvest and may impact analysis and reporting of your data in the National Report. The data version, surgery year, short name and field name are shown for each issue to help you target and prioritize your data review and clean-up activity. Information on missing data is only reported for variables used in reports or risk-adjustment models.

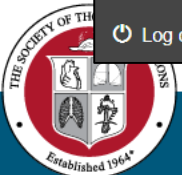
CHSD Participant Dashboard Report

STS Reports

Data Download Report

Primary Procedure Mismatch and Mortality Eligibility Summary Report

[Primary Procedure Mismatch and Mortality Eligibility Summary Report](#)
The Primary Procedure Mismatch report will identify operation records where the primary procedure that was assigned by the Participant does not match the Primary Procedure assigned by the Data Warehouse. The Case Eligibility for Inclusion in Mortality Analysis report will provide users with a summary of all cases that are identified as ineligible for risk analysis.



Op Type 1 & 2 Case Eligibility Summary Report tab

Filters

Type to search filters

Op Type 1 & 2 Case Eligibility

Surgery Year

☒ 2016

☒ 2017

☒ 2018

☒ 2019

Patient ID

Type to search in list

(All) 405 values

1085749

1130359

1134496

1140553

114692

1149187

Ineligible or Eligible

☒ Eligible

☒ Ineligible

Missing Mortality Yes/No

☒ No

☒ Yes

Data Version

☒ 3.3

☒ 3.41

Op Type 1 & 2 Case Eligibility Summary Report

Op Type 1 & 2 Case Eligibility Summary

| Surgery Year | Surgical Date Range | Total Number of Recor... | Number of Ineligible Cases | % Missing or "Unknown" |
|--------------|----------------------------|--------------------------|----------------------------|------------------------|
| 2016 | 15 Jan 2016 - 15 Dec 2016* | 161 | 2 | 1.24 |
| 2017 | 01 Jan 2017 - 15 Dec 2017* | 108 | 1 | 0.93 |
| 2018 | 15 Jan 2018 - 15 Dec 2018* | 103 | 0 | 0.00 |
| 2019 | 01 Jan 2019 - 31 Dec 2019 | 90 | 31 | 35.23 |
| Grand total | | 462 | 34 | 37.40 |

Report Notes:

- For the Report Overview, please navigate to the Library for further reference.
- 'Unknown' value treated as missing
- One of the following variables are missing or unknown:
 - Mortality variables:
 - Mortality Status at Hospital Discharge (SeqNo. 4230 for both versions)
 - Mortality Status at Database Discharge (SeqNo. 4250 for version 3.3) and (SeqNo. 4260 for version 3.41)
 - Status at 30 days after surgery (SeqNo. 4300 for both versions)
 - Non Mortality variables:
 - Date of Admission (SeqNo. 780 for both versions)
 - Operation Type (SeqNo. 1056 for both versions)
 - The following variables are required to save an operation record to the database: Date of Surgery (Surgdt), Primary Diagnosis (PrimDiag), and Primary Procedure (PrimProc) and therefore will not be flagged as missing or unknown.
- Inpatients are included in the total case count column results. Inpatients are excluded from the Number of Ineligible cases and the %Missing or Unknown column calculations.
- (*) indicates partial year data.

Op Type 1 & 2 Case Eligibility Record Details

Data VersionSurgery YearOperation IDPatient IDIneligible or EligibleDatabase Discharge Status30-day StatusOperation TypeDate of AdmissionDate of SurgeryPrimary DiagnosisPrimary ProcedureAccess Case

Primary Procedure Mismatch Summary ReportOp Type 1 & 2 Case Eligibility Summary Report

462 of 462 rows0 marked20 c

Primary Procedure Mismatch Summary Report tab

Filters

Type to search filters

Primary Procedure Determination

Surgery Year

☒ 2016

☒ 2017

☒ 2018

☒ 2019

Patient ID

Type to search in list

(All) 35 values

1626808

270468

357891

411441

654253

674736

Data Version

☒ 3.3

☒ 3.41

Primary Procedure Mismatch Summary Report

Op Type 1 & 2 Case Eligibility Summary Report

39 of 39 rows 0 marked 14 column

Primary Procedure Mismatch Summary Report

Primary Procedure Determination Summary

| Surgery Year | Surgical Date Range | Total Count |
|--------------|----------------------------|-------------|
| 2016 | 15 Jan 2016 - 15 Dec 2016* | 14 |
| 2017 | 15 Jan 2017 - 15 Dec 2017* | 12 |
| 2018 | 15 Jan 2018 - 15 Dec 2018* | 6 |
| 2019 | 15 Jan 2019 - 31 Dec 2019* | 7 |

Report Notes:

- For the Report Overview, please navigate to the Library for further reference.
- Please note that primary procedure selected in your software may not match the primary procedure ultimately assigned by DCRI during analysis.
- (*) indicates partial year data.

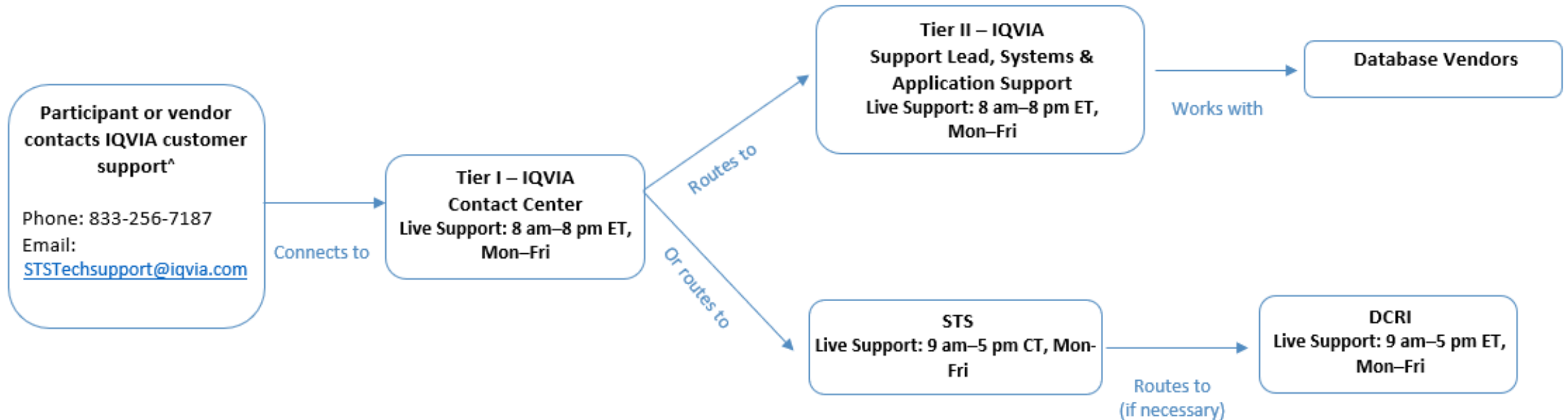
Primary Procedure Determination Record Details

| Data Version | Surgery Year | Operation ID | Patient ID | Participant Primary | Participant Primary Description | STS Primary | STS Primary Description | Access Case |
|--------------|--------------|--------------|------------|---------------------|---------------------------------|-------------|-------------------------|-------------|
|--------------|--------------|--------------|------------|---------------------|---------------------------------|-------------|-------------------------|-------------|

STS/IQVIA Support Plan



IQVIA's Support Plan



^ Inquiries received outside live support hours will require a 24-hour turnaround window (i.e., one business day) for responses.



Resources

- [STS National Database Webpage](#)
- STSTechSupport@IQVIA.com (Uploader, DQR, Missing Variable, Dashboard, Password and Login)
- Phone Support: 1-833-256-7187
- [STS National Database Feedback Form](#)
- Resource Documents
 - Contact Information
 - Webinar Information
 - FAQ Document
 - Go-Live Checklist
 - Tiered-level Support Document
 - *Training Videos*
 - *Link to IQVIA*

Contact Information

- Leigh Ann Jones, STS National Database Manager, Congenital and General Thoracic
 - Ljones@sts.org
 - 312-202-5822
- Database Operational Questions
 - STSDB@sts.org



Next CHSD Webinars

New Data Manager Webinar

- August 27 @ 11 am Central

User Group Call

- September 8 @ 12pm Central

Monthly Webinar

- September 15 @ 12pm Central



Open Discussion

Please use the Q&A Function.

We will answer as many questions as possible.

We encourage your feedback and want to hear from you!