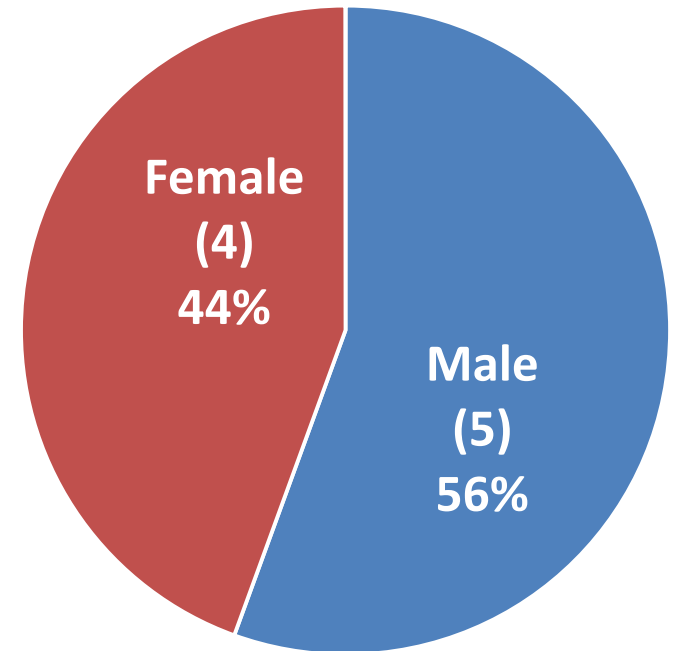
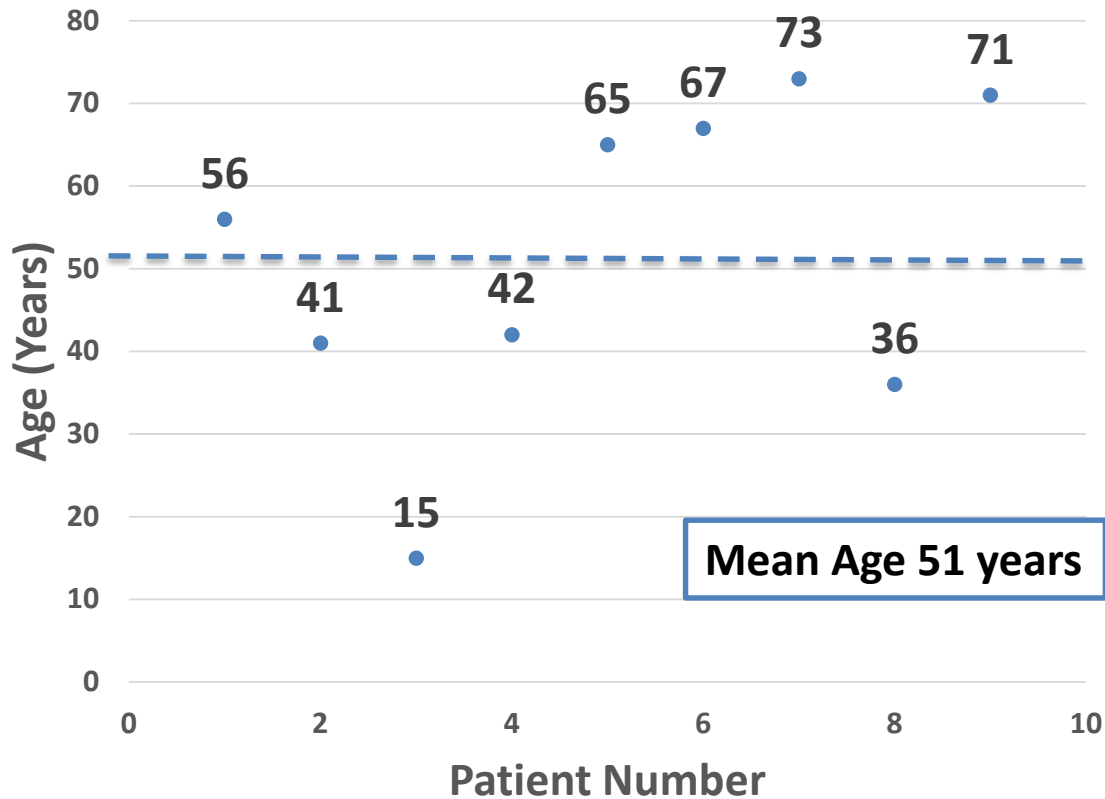




Single Center Experience in Latin America with HeartMate II and III Left Ventricular Assist Devices

**Antonio Figueredo Moreno, MD, MBA
Cardiac Surgeon
Fundación Cardiovascular de Colombia**

Patients Data



All patients with BMI (kg/m^2) in Normal Rank: mean 22 (19-25)

Treatment Strategy

Destination Therapy

Bridge to Transplant

1

56y, Idiopathic dilated cardiomyopathy, INTERMACS 4, DTRS 8

2

41y, Dilated cardiomyopathy (Arrhythmogenic Right Ventricular Dysplasia), INTERMACS 3, DTRS 9

3

15y, Idiopathic dilated cardiomyopathy, INTERMACS 3-4, DTRS 7

4

42y, Viral dilated cardiomyopathy , INTERMACS 3, DTRS 8

5

65y, Dilated cardiomyopathy secondary to anthracyclines, INTERMACS 4, DTRS 2

6

67y, Idiopathic dilated cardiomyopathy, INTERMACS 4, DTRS 2

7

73y, Valvular cardiomyopathy, INTERMACS 4, DTRS 8

8

36y, Viral dilated cardiomyopathy, INTERMACS 4, DTRS 5

9

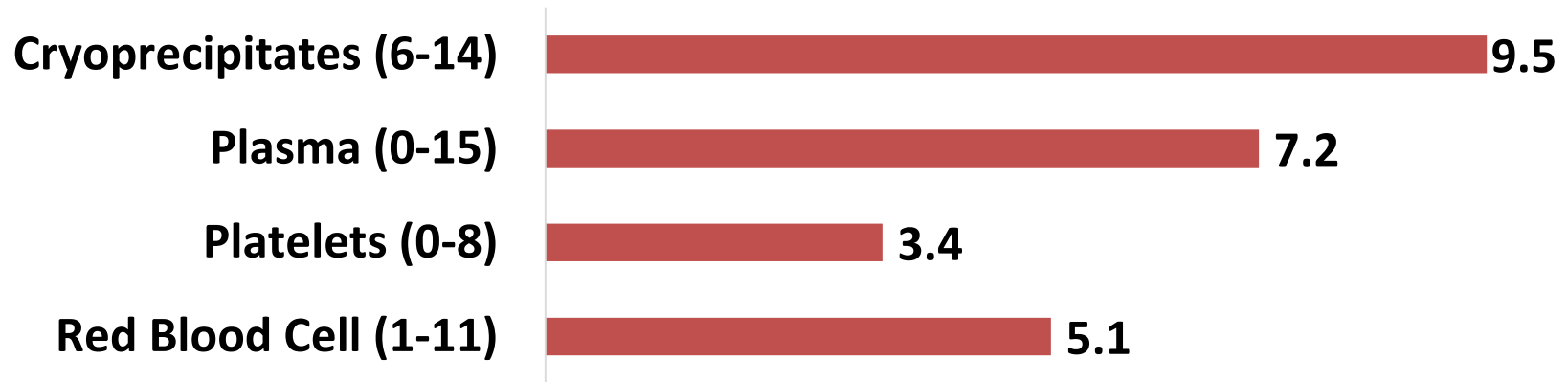
71y, Chagasic dilated cardiomyopathy, INTERMACS 3, DTRS 5

Patients

No.	Cases	Other Diagnosis	Other Devices	Other Support	Surgery
1	F, 56y, EF 35%	Positive Serology HTLV I - II	ICD	-	HM II
2	F, 41y, EF 15%	Arrhythmogenic right ventricular dysplasia	Pacemaker	VA ECMO x 6d + LVAD Centrimag x 122d	HM II + Aortic valvuloplasty + Tricuspid valvuloplasty + Repair RV aneurysm
3	M, 15y, EF 31%	-	-	-	HM II
4	F, 42y, EF 12%	-	ICD	VA ECMO x 11d, weaning 20d before	HM II
5	F, 65y, EF 30%	Breast cancer, Discoid lupus erythematosus, Sjogren's syndrome	-	-	HM II
6	M, 67y, EF 10%	-	ICD	-	HM II + Closure aortic valve
7	M, 73y, EF 20%	-	ICD	-	HM II + Aortic valvuloplasty + Tricuspid valvuloplasty
8	M, 36y, EF 10%	-	-	-	HM III
9	M, 71y, EF 15%	-	ICD	-	HM III + AVR

Adverse Events

Transfusions in HeartMate Surgery



Postoperative Adverse Events	No. (%)
Bleeding requiring surgery	3 (22%)
Sepsis	1 (11%)
Right heart failure	1 (11%)

Postoperative Length of Stay: Mean 28 days (17-57)

Mortality Case HM II

Case No.7 (1/9-11%)

- M, 73y, history of bariatric surgery, valvular cardiopathy, INTERMACS 4, DTRS 8, HM II + Aortic valvuloplasty + Tricuspid valvuloplasty.
- Reoperation to drain blood collection next to graft.
- Right heart failure symptoms, inflow cannula of HeartMate obstructed by displacement to the lateral region of the heart.
- Reintervention to reposition device.
- Sacral sore, chylothorax, septic shock due to pan-resistant gram-negative germs, renal dialysis failure, without recovery prognosis, dies at day 57 of the implant.

Rehospitalization

FCV 4/8 (50%) Follow-up 20 months (5-42)

- **Patient 1:**
 - Alteration power pump, 2 days
 - Subdural hematoma due anticoagulation requiring surgical drainage, 36 days
 - Infection driveline, 11 days
- **Patient 3:**
 - Community acquired pneumonia, 3 days
- **Patient 4:**
 - Abnormal uterine bleeding, 3 days
 - Abnormal uterine bleeding, 5 days
 - Hysterectomy, Sternal colection E. fecalis and Candida, 106 days
- **Patient 9:**
 - Hyperkalemia, 2 days